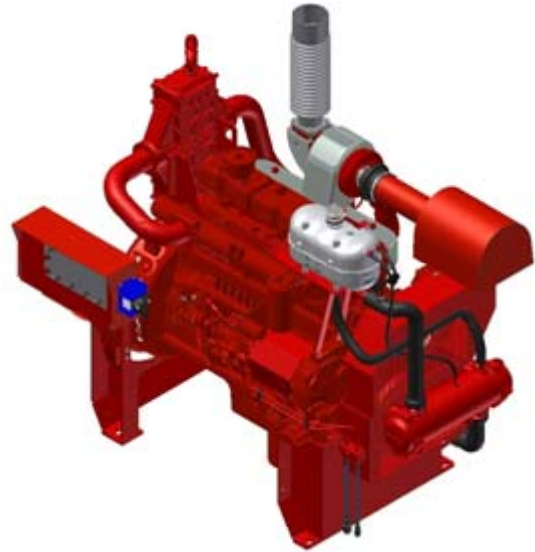


### FM-UL-cUL APPROVED RATINGS BHP/KW

DP6H MODEL ◆ λ	RATED SPEED							
	1470		1760		2100		2350	
DP6H-UFAAX8	240	179						
DP6H-UFAA50			265	198	280	209	286	213
DP6H-UFAA88			290	216				
DP6H-UFAA62							300	224
DP6H-UFAA70					312	233	316	236

◆ All Models are available for Export

λ = Non-Emissionized



### SPECIFICATIONS

ITEM	DP6H MODELS				
	UFAAX8	UFAA50	UFAA88	UFAA62	UFAA70
Number of Cylinders	6				
Aspiration	TRWA				
Rotation*	CW				
Weight – lb (kg)	2250 (1020)				
Compression Ratio	16.7:1				
Displacement – cu. in. (l)	492 (8.1)				
Engine Type	4 Cycle, 2 Valves per Cylinder, In-Line				
Bore & Stroke – in. (mm)	4.37 x 5.47 (111 x 139)				
Installation Drawing	D659				
Wiring Diagram AC	C07651				
Wiring Diagram DC	C071842				
Speed Interpolation	Optional				

Abbreviations: CW – Clockwise TRWA – Turbocharged with Raw Water Aftercooling

\*Rotation viewed from Heat Exchanger / Front of engine

#### CERTIFIED POWER RATING

- Each engine is factory tested to verify power and performance.

#### ENGINE RATINGS BASELINES

- Engines are to be used for stationary emergency standby fire pump service only. Engines are to be tested in accordance with NFPA 25.
- Engines are rated at standard SAE conditions of 29.61 in. (752.1 mm) Hg barometer and 77°F (25°C) inlet air temperature [approximates 300 ft. (91.4 m) above sea level] by the testing laboratory (see SAE Standard J 1349).
- A deduction of 3 percent from engine horsepower rating at standard SAE conditions shall be made for diesel engines for each 1000 ft. (305 m) altitude above 300 ft. (91.4 m)
- A deduction of 1 percent from engine horsepower rating as corrected to standard SAE conditions shall be made for diesel engines for every 10°F (5.6°C) above 77°F (25°C) ambient temperature.

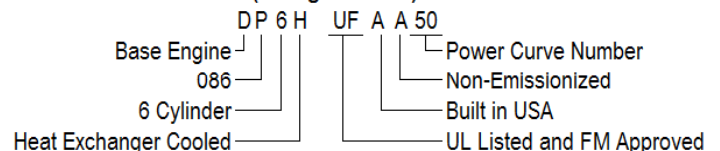


### ENGINE EQUIPMENT

EQUIPMENT	STANDARD	OPTIONAL
Air Cleaner	Direct Mounted, Washable, Indoor Service with Drip Shield	Disposable, Drip Proof, Indoor Service Outdoor Type, Single or Two Stage
Alternator	24V-DC, 45 Amps with Dual (2) V-Belt Drive with Guard	
Exhaust Protection	Blankets	
Coupling	Bare Flywheel	Listed Driveshaft & Guard CDS50-SC at 1760 and 2100 RPM only; Vertical Turbine Drivedisc
Exhaust Flex Connection	DP6H-UFAAX8, AA50, AA88, AA62 - Stainless Steel Flex, 150# Flange Connection, 5" DP6H-UFAA70 - Stainless Steel Flex, 150# Flange Connection, 6"	DP6H-UFAAX8, AA50, AA88, AA62 - Stainless Steel Flex, 150# Flange Connection, 6" DP6H-UFAA70 - Stainless Steel Flex, 150# Flange Connection, 8"
Flywheel Housing	SAE #1	
Flywheel Power Take Off	14.0" Industrial Flywheel Connection	
Fuel Connections	Fire Resistant, Flexible, USA Coast Guard Approved, Supply and Return Lines	
Fuel Filter	Primary and Secondary	
Fuel Injection System	Direct Injection, Inline Pump	
Engine Heater	230V-AC, 1500 Watt	115V-AC, 1500 Watt
Governor, Speed	Variable Speed, Mechanical	
Heat Exchanger	Tube and Shell Type, 60 PSI (4 BAR), NPT(F) Connections	Sea/Salt Water Compatible
Instrument Panel	Tachometer, Hourmeter, Water Temperature, Oil Pressure and Two (2) Voltmeters, Front Opening	
Junction Box	Integral with Instrument Panel; For DC Wiring Interconnection to Engine Controller	
Lube Oil Cooler	Engine Water Cooled, Plate Type	
Lube Oil Filter	Full Flow with By-Pass Valve	
Lube Oil Pump	Gear Driven, Gear Type	
Manual Start Control	On Instrument Panel with Control Position Warning Light	
Overspeed Control	Electronic with Reset and Test on Instrument Panel	
Raw Water Solenoid Operation	Automatic from Fire Pump Controller and from Engine Instrument Panel	
Run – Stop Control	On Instrument Panel with Control Position Warning Light	
Run Solenoid	24V-DC Energized to Stop	
Starters	One (1) 24V-DC with Two (2) Start Contactors	
Throttle Control	Adjustable Speed Control, Tamper Proof	
Water Pump	Centrifugal Type, Dual (2) V-Belt Drive with Guard	

Abbreviations: DC – Direct Current, AC – Alternating Current, SAE – Society of Automotive Engineers, NPT(F) – National Pipe Tapered Thread (Female)

#### MODEL NOMENCLATURE (10 Digit Models)



**CLARKE** Fire Protection Products, Inc.  
 3133 E. Kemper Rd., Cincinnati, Ohio 45241  
 United States of America  
 Tel +1-513-475-(FIRE)3473 Fax +1-513-771-0726  
 www.clarkefire.com

**CLARKE** UK, Ltd.  
 Grange Works, Lomond Rd., Coatbridge, ML5-2NN  
 United Kingdom  
 Tel +44-1236-429946 Fax +44-1236-427274  
 www.clarkefire.com