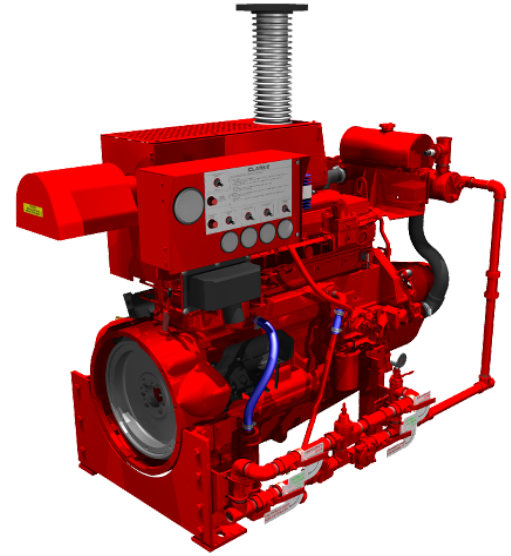


JU6H-UFD0	JU6H-UFM0	JU6H-UFKAL2	JU6H-UFAARG
JU6H-UFD2	JU6H-UFM2	JU6H-UF60	JU6H-UFAAS0
JU6H-UF30	JU6H-UF58	JU6H-UF62	JU6H-UFKAS2
JU6H-UF32	JU6H-UF50	JU6H-UFAAQ8	JU6H-UFAAT0
JU6H-UFM8	JU6H-UF52	JU6H-UFAAPG	JU6H-UFAAT2
			JU6H-UFAAT8

JU6H MODEL	RATED SPEED (BHP / kW)					
	1470	1760	1900	2100	2350	2600
UFD0		110 82		144 107	148 110	
UFD2					148 110	148 110
UF30	94 70	140 104		160 119	160 119	
UF32					160 119	160 119
UFM8	136 101	175 131				
UFKAL2					175 131	175 131
UFM0		175 131		207 154	200 149	
UFM2					200 149	200 149
UF58	138 103	183 137				
UF50		183 137		210 157	210 157	
UF52					210 157	210 157
UFAAPG	220 164					
UFAAQ8		227 169				
UF60		200 149		240 179	240 179	
UF62					240 179	240 179
UFAARG		252 188				
UFAAS0				260 194		
UFKAS2					275 205	278 207
UFAAT2					295 220	291 ¹ 217 ²
UFAAT8		265 198	273 203.5			
UFAAT0				293 218.5	295 220	

Note:

- 1) Engine models with an "•" may have elevation restrictions. Please consult factory to confirm application.
- 2) Engine models with an "◆" are available for export.



Picture shown represents JU6H-T engine model

ITEM	JU6H MODELS																			
	D0	D2	30	32	M8	M0	M2	58	50	52	KAL2	60	62	AAPG	AAQ8	AARG	AAS0	AAT0	AAT2	KAS2
Number of Cylinders	6																			
Aspiration	T											TRWA								
Rotation*	CW																			
Overall Dimensions - in.(mm)	59.8(1519) H X 57.4(1457) L X 36.6(930) W											59.8(1519) H X 58(1473) L X 36.6(930) W								
Crankshaft Centerline Height - in.(mm)	14 (356)																			
Weight - lb (kg)	1657 (750)											1693 (766)								
Compression Ratio	17.0:1																			
Displacement - cu. in. (l)	414 (6.8)																			
Engine Type	4 Stroke Cycle - Inline Construction																			
Bore & Stroke - in. (mm)	4.19 x 5.00 (106 x 127)																			
Installation Drawing	D536											D763			D776					
Wiring Diagram AC	C07651																			
Wiring Diagram DC	C072145																			
Engine Series	John Deere 6068 Series																			
Speed Interpolation	Optional																			

Abbreviations: CW - Clockwise T -Turbocharged TRWA - Turbocharged with Raw Water Aftercooling L - Length W - Width H - Height

*Rotation viewed from Heat Exchanger / Front of engine

CERTIFIED POWER RATING

- Each engine is factory tested to verify power and performance

ENGINE RATINGS BASELINES

- Engines are to be used for stationary emergency standby fire pump service only. Engines are to be tested in accordance with NFPA 25.
- Engines are rated at standard SAE conditions of 29.61 in. (752.1 mm) 77°F (25°C) inlet air temperature [approximates 300 ft. (91.4 m) above sea level] by the testing laboratory (see SAE Standard J 1349).
- A deduction of 3 percent from engine horsepower rating at standard SAE conditions shall be made for diesel engines for each 1000 ft. (305 m) altitude above 300 ft. (91.4 m)
- A deduction of 1 percent from engine horsepower rating as corrected to standard SAE conditions shall be made for diesel engines for every 10°F (5.6°C) above 77°F (25°C) ambient temperature.



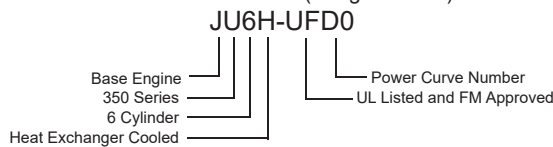
JU6H-UFD0	JU6H-UFM0	JU6H-UFKAL2	JU6H-UFAARG
JU6H-UFD2	JU6H-UFM2	JU6H-UF60	JU6H-UFAAS0
JU6H-UF30	JU6H-UF58	JU6H-UF62	JU6H-UFKAS2
JU6H-UF32	JU6H-UF50	JU6H-UFAAQ8	JU6H-UFAAT0
JU6H-UFM8	JU6H-UF52	JU6H-UFAAPG	JU6H-UFAAT2
			JU6H-UFAAT8

ENGINE EQUIPMENT

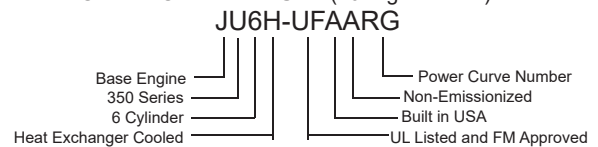
EQUIPMENT	STANDARD	OPTIONAL
Air Cleaner	Direct Mounted, Washable, Indoor Service with Drip Shield	Disposable, Drip Proof, Indoor Service Outdoor Type, Single or Two Stage (Cyclonic)
Alarms	Overspeed Alarm & Shutdown, Low Oil Pressure, Low & High Coolant Temperature, Low Raw Water Flow, High Raw Water Temperature	Low Coolant Level, Low Oil Level, Oil Filter Differential Pressure, Fuel Filter Differential Pressure, Air Filter Restriction
Alternator	12V-DC, 42 Amps with Poly-Vee Belt and Guard	24V-DC, 40 Amps with Poly-Vee Belt and Guard
Coupling	Bare Flywheel	Listed Driveshaft & Guard: UFD0, UFD2, UF30, UF32 - CDS20-S1; UFM8, UFM0, UFM2, UF58, UF50, UF52, UF60, UF62, UFKAL2 - CDS30-S1; UFAAPG, AAQ8, AARG, AAT0, AAT2, AAT8 - CDS50-SC; UFKAS2 - SC81A
Engine Heater	115V-AC, 1360 Watt	230V-AC, 1360 Watt
Exhaust Flex Connection	SS Flex, 150# ANSI Flanged Connection, 5" (AAT0, AAT2: SS Flex, 150# ANSI Flanged Connection, 6")	SS Flex, 150# ANSI Flanged Connection, 6" (AAT0, AAT2: SS Flex, 150# ANSI Flanged Connection, 8")
Exhaust Protection	Metal Guards on Manifolds and Turbocharger	
Flywheel Housing	SAE #3	
Flywheel Power Take Off	11.5" SAE Industrial Flywheel; Connection	
Fuel Connections	Fire Resistant, Flexible, Supply and Return Lines	SS, Braided cUL Listed, Supply and Return Lines
Fuel Filter	Primary Filter and Priming Pump	
Fuel Injection System	Direct Injection	
Fuel Solenoid	12V-DC Energized to Stop (ETS)	24V-DC Energized to Stop (ETS)
Governor, Speed	Constant Speed, Mechanical	
Heat Exchanger	Tube and Shell, 60 PSI (4 BAR), NPT(F) Connections - Sea Water Compatible	
Instrument Panel	NEMA Type 2, Powder Coated Steel Construction, English and Metric, Tachometer, Hourmeter, Water Temperature, Oil Pressure and (2) Voltmeters	316 Stainless Steel NEMA 4X/IP66
Junction Box	Integral with Instrument Panel; For DC Wiring Interconnection to Engine Controller	
Lube Oil Cooler	Engine Water Cooled, Plate Type	
Lube Oil Filter	Full Flow with By-Pass Valve	
Lube Oil Pump	Gear Driven, Gear Type	
Manual Start Control	On Instrument Panel with Control Position Warning Light	
Overspeed Control	Electronic with Reset and Test on Instrument Panel	
Raw Water Cooling Loop - w/Alarms	Galvanized	Seawater, All 316SS, High Pressure
Raw Water Solenoid Operation	Automatic from Fire Pump Controller and from Engine Instrument Panel (for Horizontal Fire Pump Applications)	Not Supplied (for Vertical Turbine Fire Pump Applications)
Run - Stop Control	On Instrument Panel with Control Position Warning Light	
Starters	Two (2) 12V-DC	Two (2) 24V-DC
Throttle Control	Adjustable Speed Control, Tamper Proof	
Water Pump	Centrifugal Type, Poly-Vee Belt Drive with Guard	

Abbreviations: DC - Direct Current, AC - Alternating Current, SAE - Society of Automotive Engineers, NPT(F) - National Pipe Tapered Thread (Female), SS - Stainless Steel

MODEL NOMENCLATURE (8 Digit Models)



MODEL NOMENCLATURE (10 Digit Models)



Specifications and information contained in this brochure is subject to change without notice.