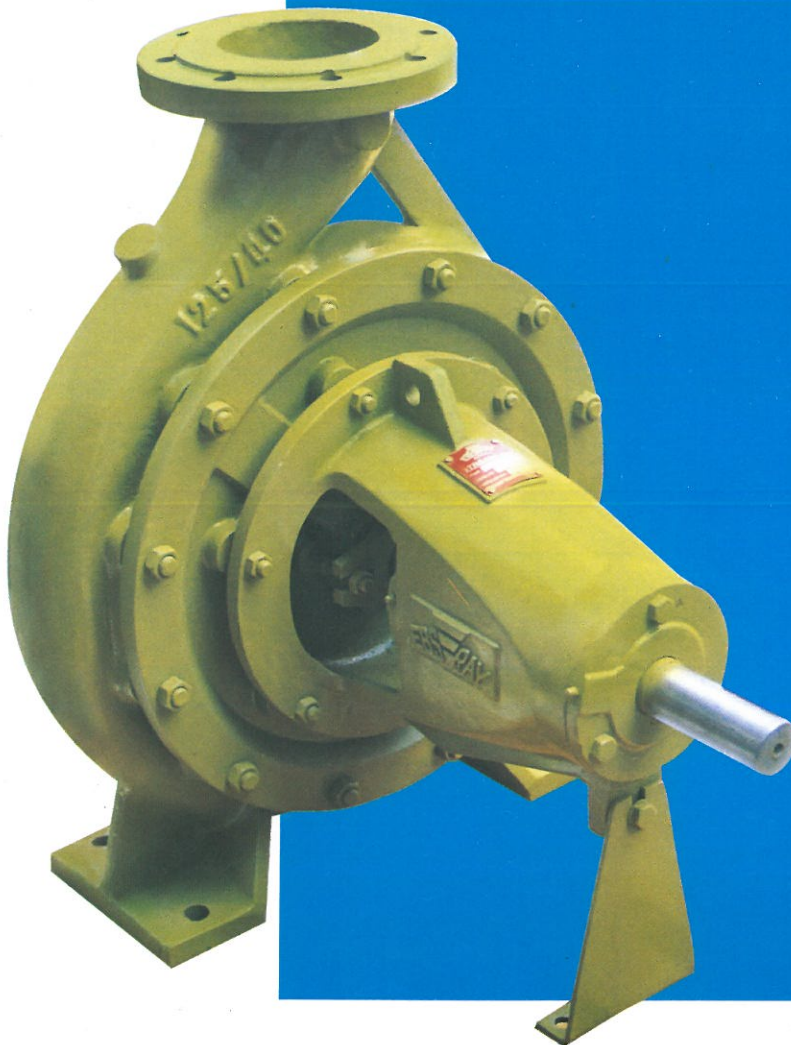


EBSRAY PUMPS



STREAMLINE

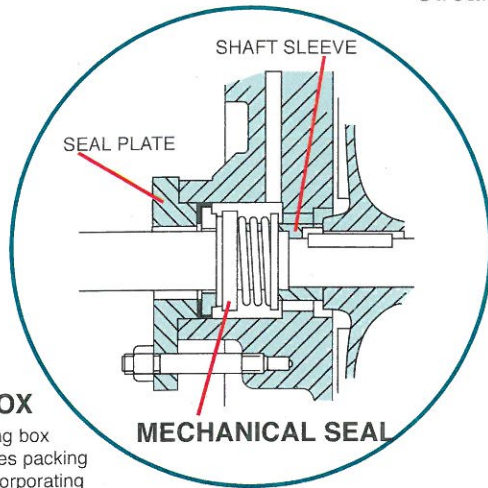
**Centrifugal
Pump Range**

EBSRAY
AUSTRALIA

STREAMLINE

Range from 32mm-150mm discharge

Streamline pump range fully complies to the International Standard DIN 24255, which is a performance and dimensional standard. This range has 33 models with grease lubricated bearings and a further four models with oil lubricated bearings which give a wide hydraulic coverage at both 2 and 4 pole speeds for 50 Hz and 60 Hz. Most models are suitable for 16 bar working pressure.



STUFFING BOX

The standard stuffing box arrangement includes packing with lantern ring incorporating internal flushing. The stuffing box can be connected for external liquid flush or for fitting a cyclone separator. Pump can be supplied with a mechanical seal and if required field conversion from packed stuffing box to mechanical seal, or from mechanical seal to packing is easy.

BEARING HOUSINGS

Only three bearing housings are required for the total pump range which gives high interchangeability of parts across the complete range.

BEARINGS

Bearings are grease lubricated and are fitted with grease nipples which will allow periodic regreasing of the bearings for improved life.

SUPPORT FOOT

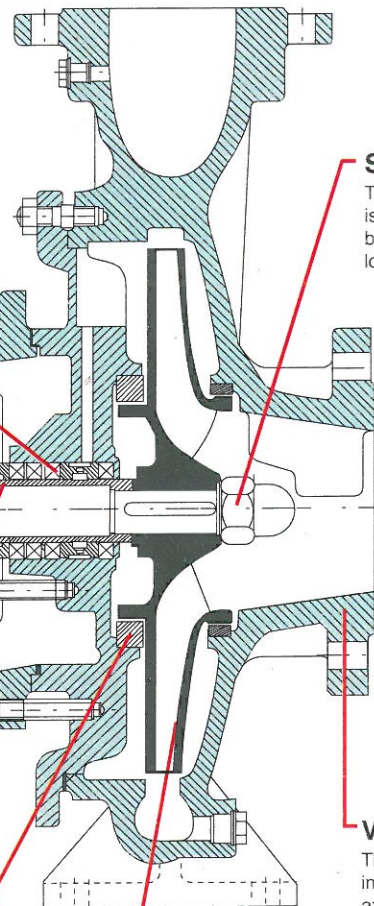
A removable support foot is fitted at the drive end for greater rigidity and ease of maintenance.

SHAFT SLEEVE

Replaceable stainless steel positively driven shaft sleeve is of substantial benefit when pump requires maintenance. Any damage under the gland packing can be quickly rectified by replacing the sleeve and not the whole shaft.

WEAR RINGS

Replaceable wear rings are fitted to all casings and also to back covers on larger pumps which gives considerable maintenance cost and time saving.



SHAFT

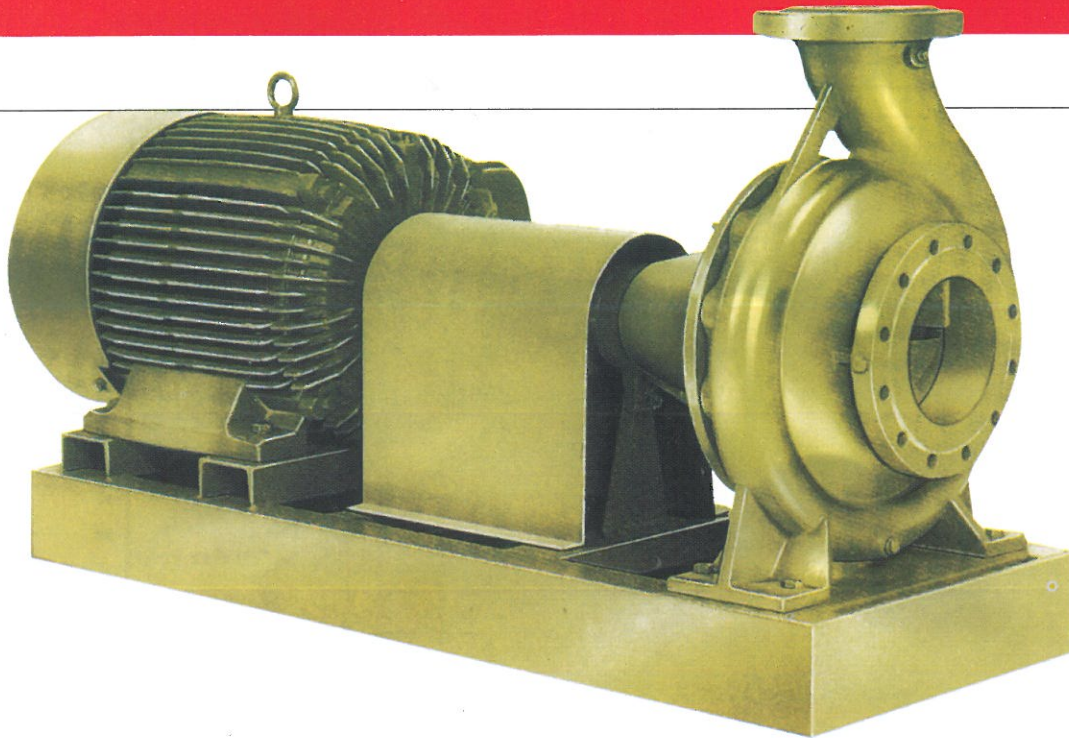
The stainless steel shaft is sealed at the impeller by means of dome type locking nut.

VOLUTE CASING

The volute casing has integrally cast feet, axial suction and robust vertical top centre-line discharge. Inlet has cast vane to improve flow into impeller eye.

IMPELLERS

Impellers are of the double shrouded type, hydraulically balanced on smaller diameters by back vanes and on larger diameters by replaceable wear rings. Twisted vane design gives optimum fluid flow into the impeller eye, enhancing suction performance and efficiency.



Specification

Maximum Capacity	150 l/s
Maximum Head	150 m
Maximum Working Pressure	1600 kPa on most models
Temperature Range	-10°C to 105°C
Direction of Rotation	Clockwise viewed from drive end

Materials of Construction

Casing	Cast Iron
Impeller	Bronze
Wear Ring	Cast Iron
Shaft	Stainless Steel
Shaft Sleeve	Stainless Steel
Lantern Ring	Cast Iron
Gland	Cast Iron

Other materials of construction are available

STREAMLINE

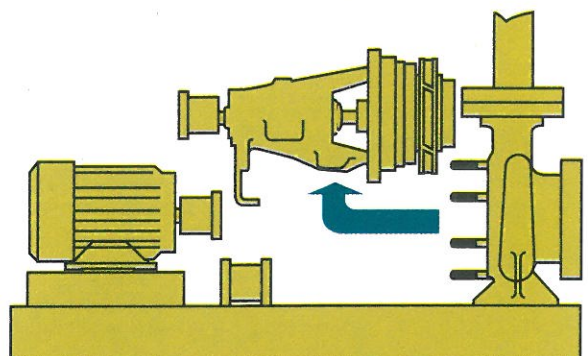
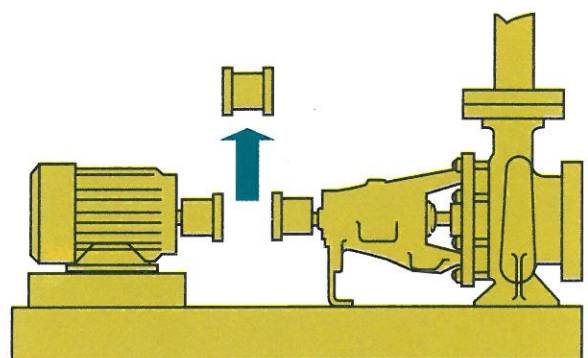
Back pull-out feature

With the Streamline back pull-out feature, the complete rotating element bearing housing assembly can be removed without disturbing the suction and discharge pipework connections. If a spacer coupling with adequate spacer length is fitted, the motor can also remain in position. Maintenance is made simpler and the pump downtime is drastically reduced if a spare rotating element is available.

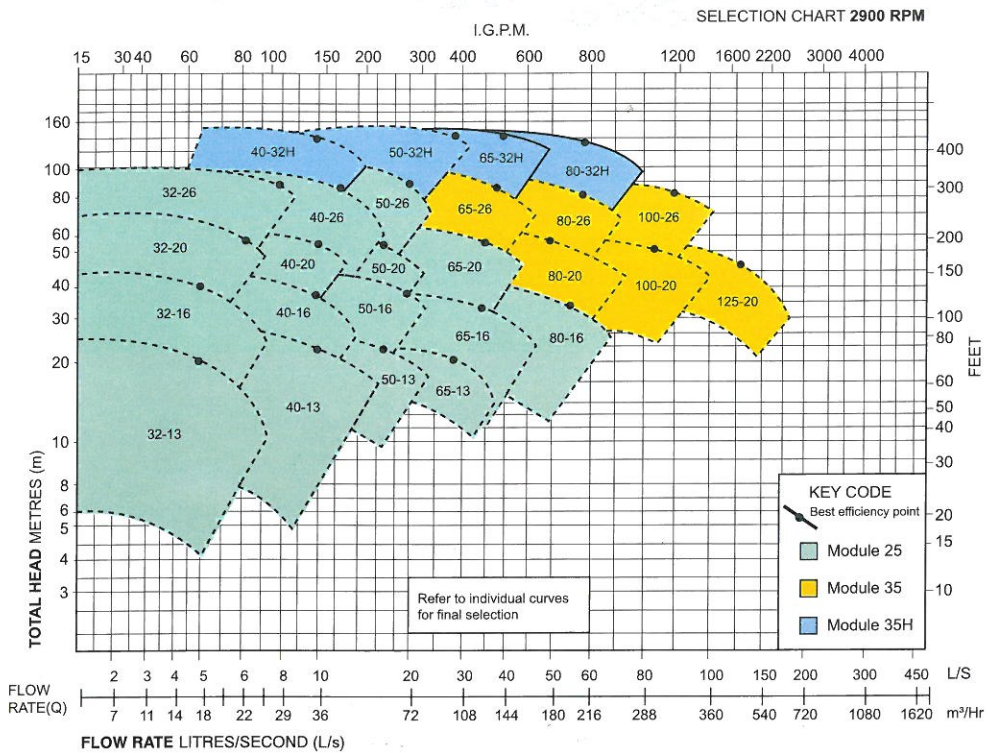
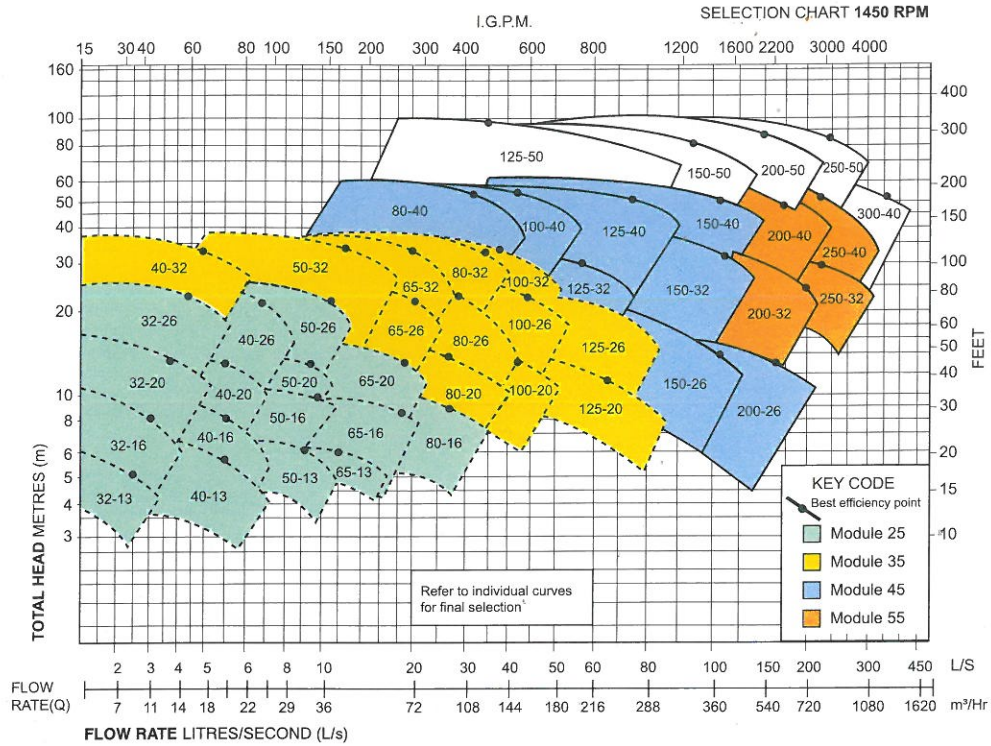
To remove the rotating assembly the coupling spacer is withdrawn and the nuts holding the bearing frame to the casing removed. Any auxiliary pipework and the support foot are then disconnected and the rotating assembly removed. If a spare rotating assembly is available this can immediately be fitted and the pump can be back in service while maintenance is carried out on the original unit. There is no need to realign the coupling when a rotating element is replaced.

SPECIAL PACKAGE UNITS

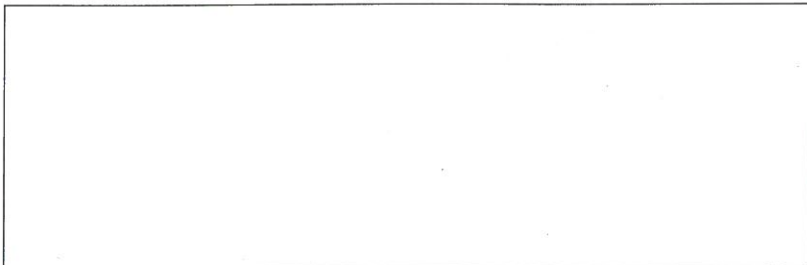
Pumps can be supplied as bare shaft units or as complete package units incorporating baseplate, coupling, coupling guard and driven by electric motor, diesel or petrol engine.



STREAMLINE Range chart



Due to the policy of constant research and development, specifications may change without notice.



EXPORT LEAFLET

EBS-RAY PUMPS PTY. LIMITED

ACN 000 061 003

Head Office and Works
628 Pittwater Road
Brookvale NSW 2100
Australia.

Branch Office: Victoria
Phone: (03) 9706 7263
Fax: (03) 9706 7312

Phone: (02) 9905 0234
Fax: (02) 9938 3825

Branch Office: Queensland
Phone: (07) 3260 7411
Fax: (07) 3260 7422

