



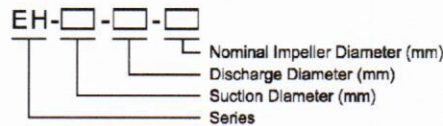
### Description & Features

EH pumps are designed in accordance with ISO 2858 standard while the performance even better than ISO 2858. Pumps have superior hydraulic design, by which significantly higher efficiencies are achieved for less power consumption. The flow rates are 1.6 times and the head are 1.25 times of their correspondent sizes in ISO 2858 standard.

Pump performance can be changed by impeller trimming. There are 4 sizes of shafts and 4 sizes of bearing housing among the whole series, and many of the parts such as shaft, shaft sleeve, shaft seal and impeller nut of one pump are interchangeable with other pumps of the same bearing housing.

Back pull-out design and driven by motor or other driving device through flexible coupling, very easy and convenient to install and maintain.

### Model Instruction



### Applications

- Water supply and drainage
- HVAC and Cooling Tower
- Fire Protection and Fire Fighting
- Marine-Ballasting & Blige
- Booster and Pressurization Set
- Irrigation and agriculture
- Water supply and drainage

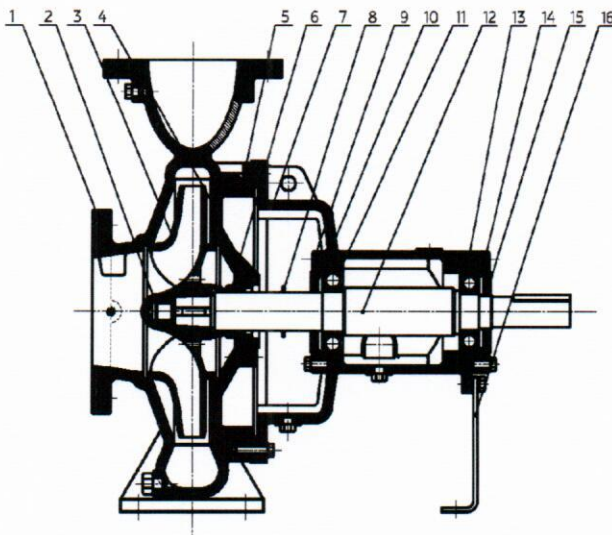
### Operating Data

**Flowrate:** Max. 1200 m<sup>3</sup>/h  
**Head:** Max. 160m  
**Discharge Diameter(mm):** 32~200  
**Working Pressure(Mpa):** 1.6~2.4  
**Temperature:** -15°C~80°C ( Normal Material )  
 80°C~145°C ( Special Material )  
**Speed(r/min):** 1450 / 2900 (50Hz),  
 1750 / 3500 (60Hz)

### Material

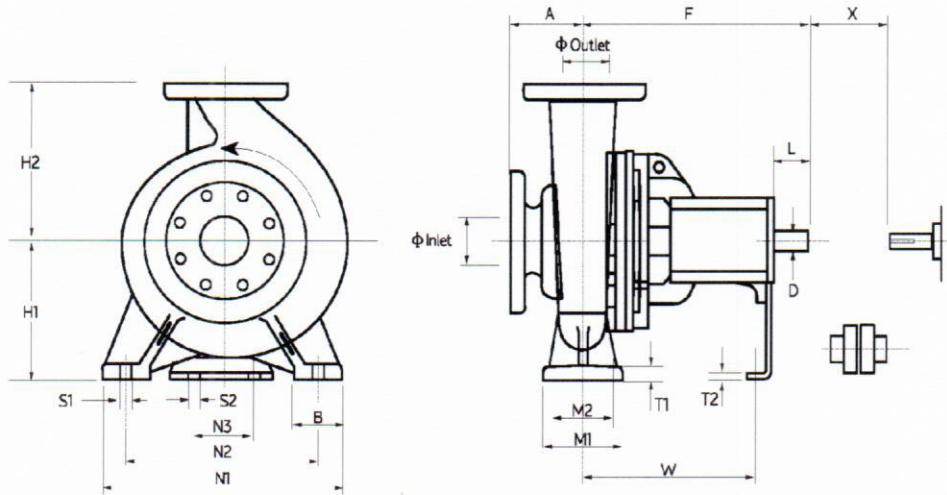
| Pump Part | Material        |
|-----------|-----------------|
| Casing    | Cast Iron       |
|           | Ductile Iron    |
| Impeller  | Cast Iron       |
|           | Brass           |
|           | Bronze          |
|           | Stainless Steel |
| Shaft     | Carbon Steel    |
|           | Stainless Steel |

### Structure & List of Parts



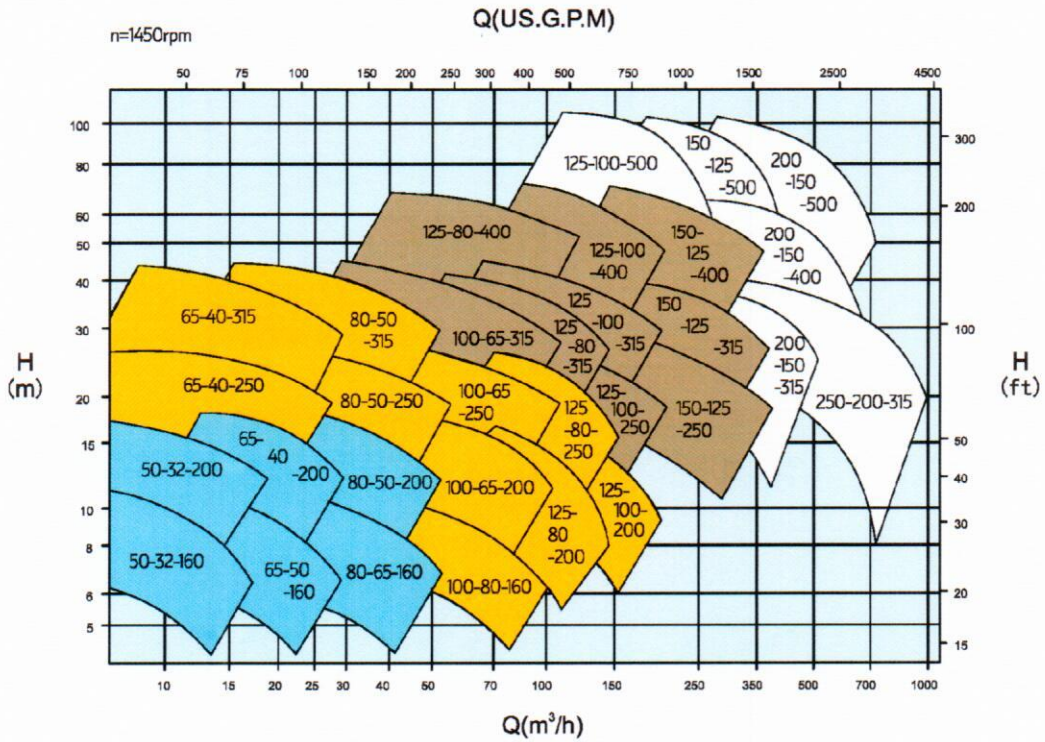
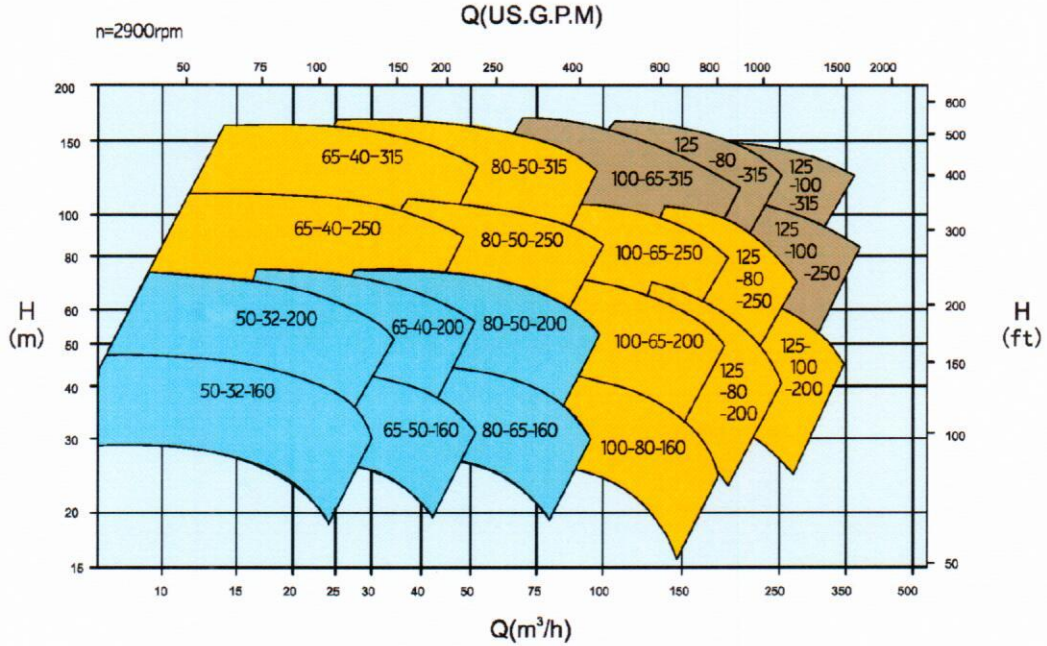
| No. | Part Name                    |
|-----|------------------------------|
| 1   | Casing                       |
| 2   | Impeller Nut                 |
| 3   | Impeller                     |
| 4   | Casing Cover                 |
| 5   | O-ring                       |
| 6   | Mechanical Seal              |
| 7   | Bearing Housing              |
| 8   | Slinger                      |
| 9   | Bearing Cover (Impeller end) |
| 10  | Oil Seal (Impeller end)      |
| 11  | Bearing (Impeller end)       |
| 12  | Shaft                        |
| 13  | Bearing (Driving end)        |
| 14  | Bearing Cover (Driving end)  |
| 15  | Oil Seal (Driving end)       |
| 16  | Support Foot                 |

EH Series Installation Dimensions



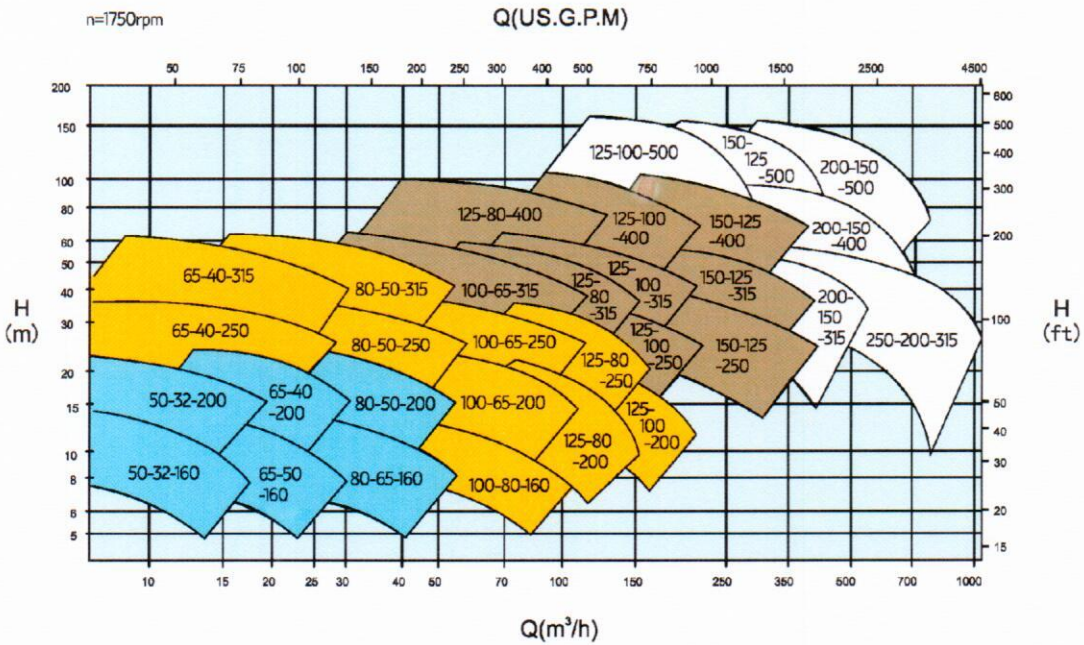
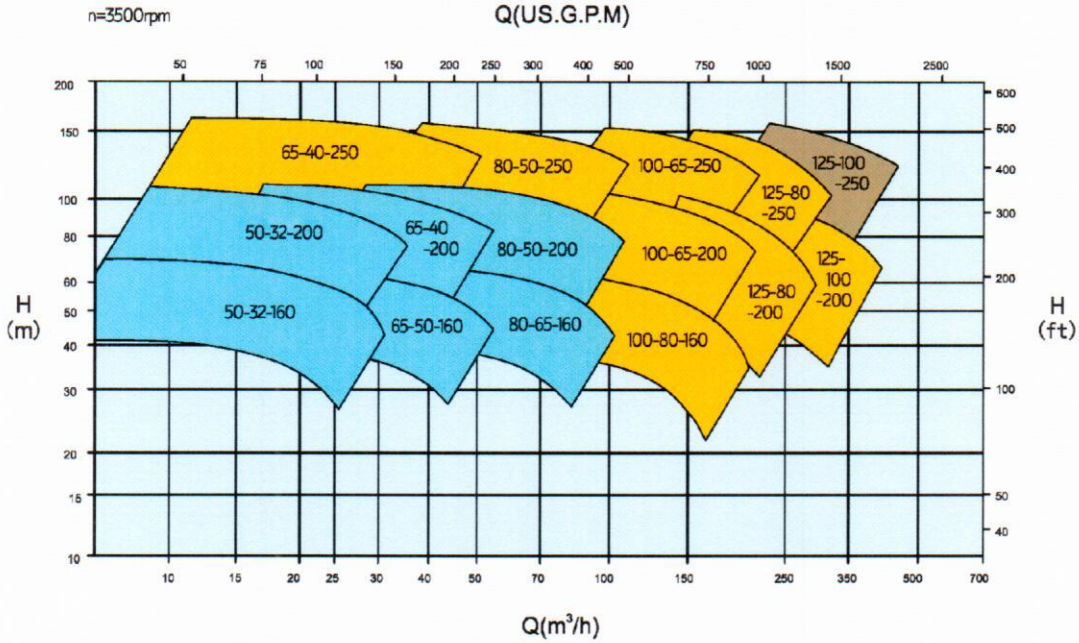
| Model |        | Imp Dia | Shaft No. | Pump Dimensions |     |     |     | Mounting Dimensions |     |     |     |     |     |    |    | Bolt Holes |     | Shaft End |    | GAP* | Weight |     |
|-------|--------|---------|-----------|-----------------|-----|-----|-----|---------------------|-----|-----|-----|-----|-----|----|----|------------|-----|-----------|----|------|--------|-----|
| Inlet | Outlet |         |           | A               | F   | H1  | H2  | B                   | M1  | M2  | N1  | N2  | N3  | T1 | T2 | W          | S1  | S2        | D  |      |        | L   |
| 50    | 32     | 160     | 1         | 80              | 385 | 132 | 160 | 50                  | 100 | 70  | 240 | 190 | 110 | 12 | 6  | 285        | M12 | M12       | 24 | 50   | 4      | 43  |
| 50    | 32     | 200     | 1         | 80              | 385 | 160 | 180 | 50                  | 100 | 70  | 240 | 190 | 110 | 13 | 6  | 285        | M12 | M12       | 24 | 50   | 4      | 49  |
| 65    | 50     | 160     | 1         | 80              | 385 | 132 | 160 | 50                  | 100 | 70  | 240 | 190 | 110 | 12 | 6  | 285        | M12 | M12       | 24 | 50   | 4      | 44  |
| 65    | 40     | 200     | 1         | 100             | 385 | 160 | 180 | 50                  | 100 | 70  | 265 | 212 | 110 | 13 | 6  | 285        | M12 | M12       | 24 | 50   | 4      | 51  |
| 65    | 40     | 250     | 2         | 100             | 500 | 180 | 225 | 65                  | 125 | 95  | 320 | 250 | 110 | 14 | 6  | 370        | M12 | M12       | 32 | 80   | 4      | 71  |
| 65    | 40     | 315     | 2         | 125             | 500 | 200 | 260 | 65                  | 125 | 95  | 345 | 280 | 110 | 18 | 6  | 370        | M12 | M12       | 32 | 80   | 4      | 90  |
| 80    | 65     | 160     | 1         | 100             | 385 | 160 | 180 | 50                  | 100 | 70  | 265 | 212 | 110 | 13 | 6  | 285        | M12 | M12       | 24 | 50   | 4      | 49  |
| 80    | 50     | 200     | 1         | 100             | 385 | 160 | 200 | 60                  | 100 | 70  | 265 | 212 | 110 | 13 | 6  | 285        | M12 | M12       | 24 | 50   | 4      | 63  |
| 80    | 50     | 250     | 2         | 125             | 500 | 180 | 225 | 65                  | 125 | 95  | 320 | 250 | 110 | 15 | 6  | 370        | M12 | M12       | 32 | 80   | 4      | 76  |
| 80    | 50     | 315     | 2         | 125             | 500 | 225 | 280 | 65                  | 125 | 95  | 345 | 280 | 110 | 18 | 6  | 370        | M12 | M12       | 32 | 80   | 4      | 94  |
| 100   | 80     | 160     | 2         | 100             | 500 | 160 | 200 | 65                  | 125 | 95  | 280 | 212 | 110 | 14 | 6  | 370        | M12 | M12       | 32 | 80   | 4      | 68  |
| 100   | 65     | 200     | 2         | 100             | 500 | 180 | 225 | 65                  | 125 | 95  | 320 | 250 | 110 | 15 | 6  | 370        | M12 | M12       | 32 | 80   | 6      | 72  |
| 100   | 65     | 250     | 2         | 125             | 500 | 200 | 250 | 80                  | 160 | 120 | 360 | 280 | 110 | 16 | 6  | 370        | M16 | M12       | 32 | 80   | 6      | 84  |
| 100   | 65     | 315     | 3         | 125             | 530 | 225 | 280 | 80                  | 160 | 120 | 400 | 315 | 110 | 18 | 8  | 370        | M16 | M12       | 42 | 110  | 6      | 122 |
| 125   | 80     | 200     | 2         | 125             | 500 | 180 | 250 | 65                  | 125 | 95  | 345 | 280 | 110 | 18 | 6  | 370        | M12 | M12       | 32 | 80   | 6      | 81  |
| 125   | 80     | 250     | 2         | 125             | 500 | 225 | 280 | 80                  | 160 | 120 | 400 | 315 | 110 | 18 | 6  | 370        | M16 | M12       | 32 | 80   | 6      | 88  |
| 125   | 80     | 315     | 3         | 125             | 530 | 250 | 315 | 80                  | 160 | 120 | 400 | 315 | 110 | 20 | 8  | 370        | M16 | M12       | 42 | 110  | 6      | 130 |
| 125   | 80     | 400     | 3         | 125             | 530 | 280 | 355 | 80                  | 160 | 120 | 435 | 365 | 110 | 20 | 8  | 370        | M16 | M12       | 42 | 110  | 6      | 163 |
| 125   | 100    | 200     | 2         | 125             | 500 | 200 | 280 | 80                  | 160 | 120 | 360 | 280 | 110 | 17 | 6  | 370        | M16 | M12       | 32 | 80   | 6      | 87  |
| 125   | 100    | 250     | 3         | 140             | 530 | 225 | 280 | 80                  | 160 | 120 | 400 | 315 | 110 | 18 | 8  | 370        | M16 | M12       | 42 | 110  | 6      | 122 |
| 125   | 100    | 315     | 3         | 140             | 530 | 250 | 315 | 80                  | 160 | 120 | 400 | 315 | 110 | 19 | 8  | 370        | M16 | M12       | 42 | 110  | 6      | 138 |
| 125   | 100    | 400     | 3         | 140             | 530 | 280 | 355 | 100                 | 200 | 150 | 500 | 400 | 110 | 20 | 8  | 370        | M20 | M12       | 42 | 110  | 6      | 175 |
| 125   | 100    | 500     | 4         | 160             | 670 | 355 | 450 | 100                 | 210 | 150 | 540 | 450 | 140 | 25 | 10 | 500        | M20 | M16       | 48 | 110  | 6      | 378 |
| 150   | 125    | 250     | 3         | 140             | 530 | 250 | 355 | 80                  | 160 | 120 | 400 | 315 | 110 | 19 | 8  | 370        | M16 | M12       | 42 | 110  | 6      | 135 |
| 150   | 125    | 315     | 3         | 140             | 530 | 280 | 355 | 100                 | 200 | 150 | 500 | 400 | 110 | 20 | 8  | 370        | M20 | M12       | 42 | 110  | 6      | 156 |
| 150   | 125    | 400     | 3         | 140             | 530 | 315 | 400 | 100                 | 200 | 150 | 500 | 400 | 110 | 21 | 8  | 370        | M20 | M12       | 42 | 110  | 6      | 193 |
| 150   | 125    | 500     | 4         | 160             | 670 | 355 | 450 | 100                 | 210 | 150 | 540 | 450 | 140 | 25 | 10 | 500        | M20 | M16       | 48 | 110  | 6      | 402 |
| 200   | 150    | 315     | 4         | 160             | 670 | 315 | 400 | 100                 | 210 | 150 | 540 | 450 | 140 | 20 | 10 | 500        | M20 | M16       | 48 | 110  | 8      | 274 |
| 200   | 150    | 400     | 4         | 180             | 670 | 315 | 450 | 100                 | 210 | 150 | 540 | 450 | 140 | 25 | 10 | 500        | M20 | M16       | 48 | 110  | 8      | 339 |
| 200   | 150    | 500     | 4         | 180             | 670 | 400 | 500 | 100                 | 210 | 150 | 540 | 450 | 140 | 25 | 10 | 500        | M20 | M16       | 48 | 110  | 8      | 426 |
| 250   | 200    | 315     | 4         | 180             | 670 | 315 | 450 | 100                 | 210 | 150 | 540 | 450 | 140 | 25 | 10 | 500        | M20 | M16       | 48 | 110  | 8      | 314 |

EH Series-50Hz Performance



Performance to ISO9906 Grade 2 for clean cold water only

EH Series-60Hz Performance



Performance: to ISO9906 Grade 2 for clean cold water only