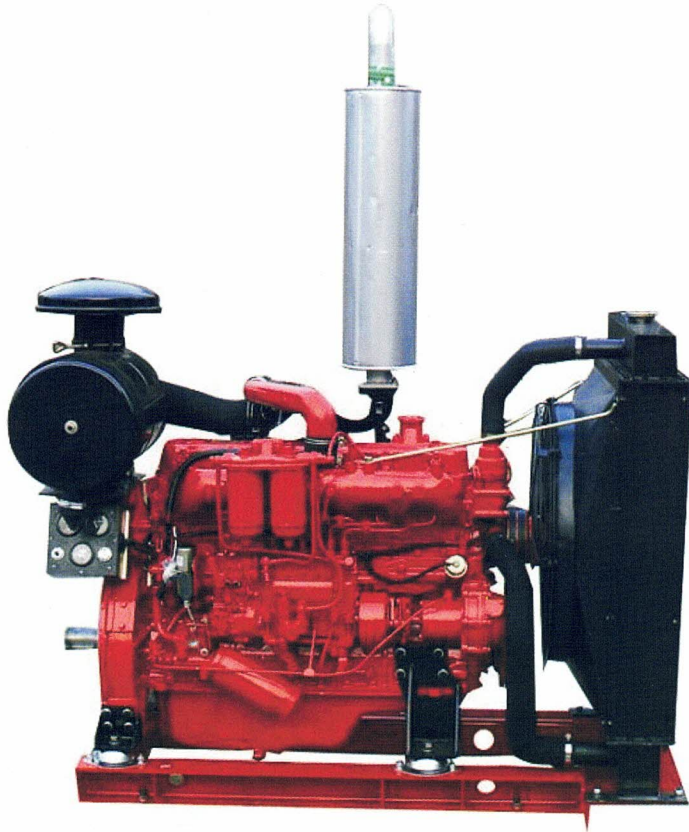




MAC-TECH DIESEL ENGINE

MD4108



■ Products Introduction

The main parts, the body and the bonnet of the MD4108 diesel engine has been designed with brand-new strong rigidity. The reliability of the engine has been improved. The igniting system, the cooling system and the lubricating system has been optimized to ensure the general performance of the whole machine and its reliability. While being optimization, the currency capability and interconvertible capability of the intrinsic parts have been preserved. So, it is the ideal equipped power of the light cars and the diverse-model tractors.

MODEL	MD4108	
Type	Vertical, water-cooling, 4-stroke, wet type, direct injection combustion chamber	
No. of cylinders	4	
Bore x stroke	(mm x mm)	108 X 118
Compression ratio	17.5	
Total displacement	(L)	4.32
Cylinder order	1-3-4-2	
Full load fuel consumption	(g/kW - h)	< 238.0
Rated power / speed	(kW/r/min)	80/3000
Max. torque	(N.m)	280N.M / 2100RPM
Oil consumption ratio	(g/kW - h)	238
Cooling fashion	Cooling by water forced	
Lubrication fashion	Splashing under pressure	
Starting fashion	Started by electric motor (24V)	
Overall dimensions(mm)	(L x H x W)	896 x 618 x 730
Net weight	(kg)	400



MAC-TECH ENGINEERING SDN. BHD. (156877-M)

21 & 23, Jalan 3/118C, Desa Tun Razak Industrial Park,
Cheras, 56000 Kuala Lumpur, West Malaysia.
Tel: (6) 03-91732606 (Hunting Line), 91732601, 91732602, 91732603
Fax: (6) 03-91732755, 91732893
Email: enquiry@mac-tech.com.my ■ <http://www.mac-tech.com.my>



MAC-TECH DIESEL ENGINE