

# ECHTOP<sup>®</sup>

# MOTOR

*New! Fire Pump Motor Ready*

SHANGHAI TOP MOTOR CO.,LTD.

SHANGHAI HALOTOP IMPORT & EXPORT CO., LTD.  
GLOBAL POWER ENGINEERING CO. LTD.

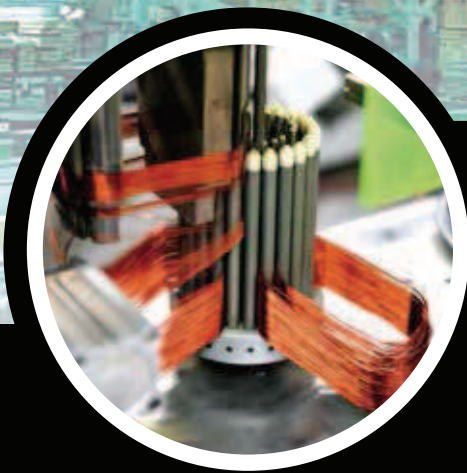




## ***WORKSHOP & TECHNOLOGY***

TECHTOP adopts computerized machine tools for metal parts; four cylinder oil hydraulic presses for stator stacking; vacuum high-pressure varnishing units for stator varnishing; clean-dry and auto-phosphorescing machines for motor housing, end shield, fan cover and other parts; electrostatic spraying-water screen-suspending line complexes for product surface painting.

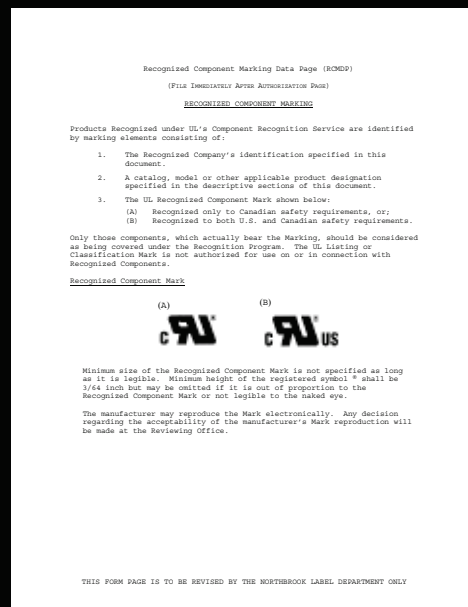
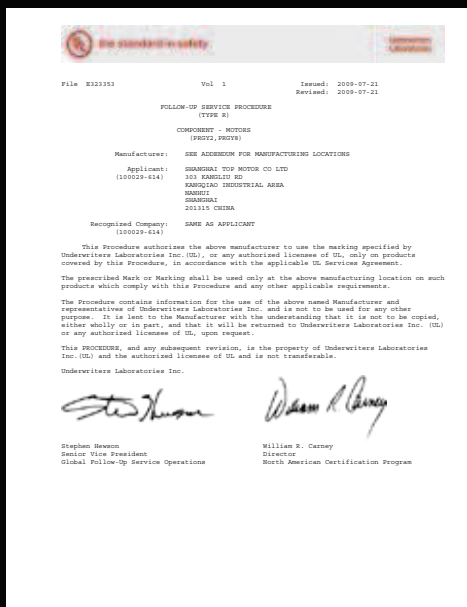




# Various Certificates



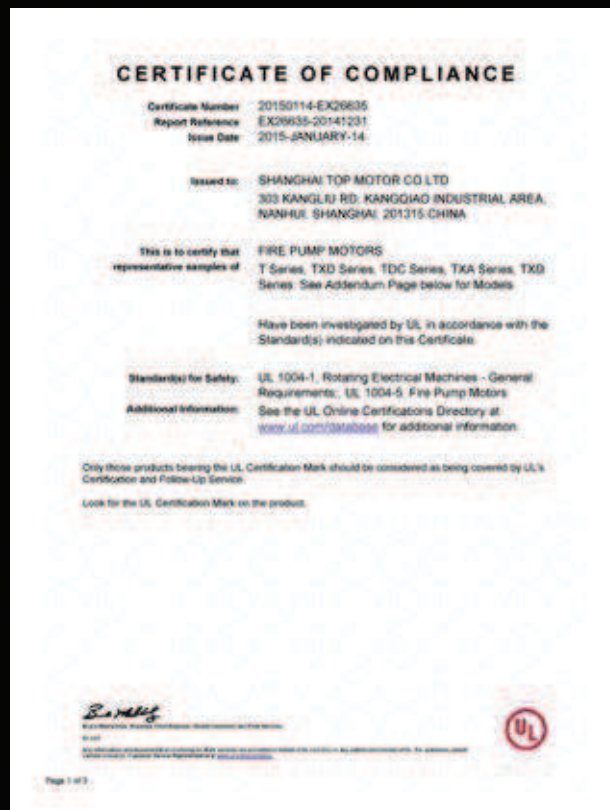
## ISO9001



## UL

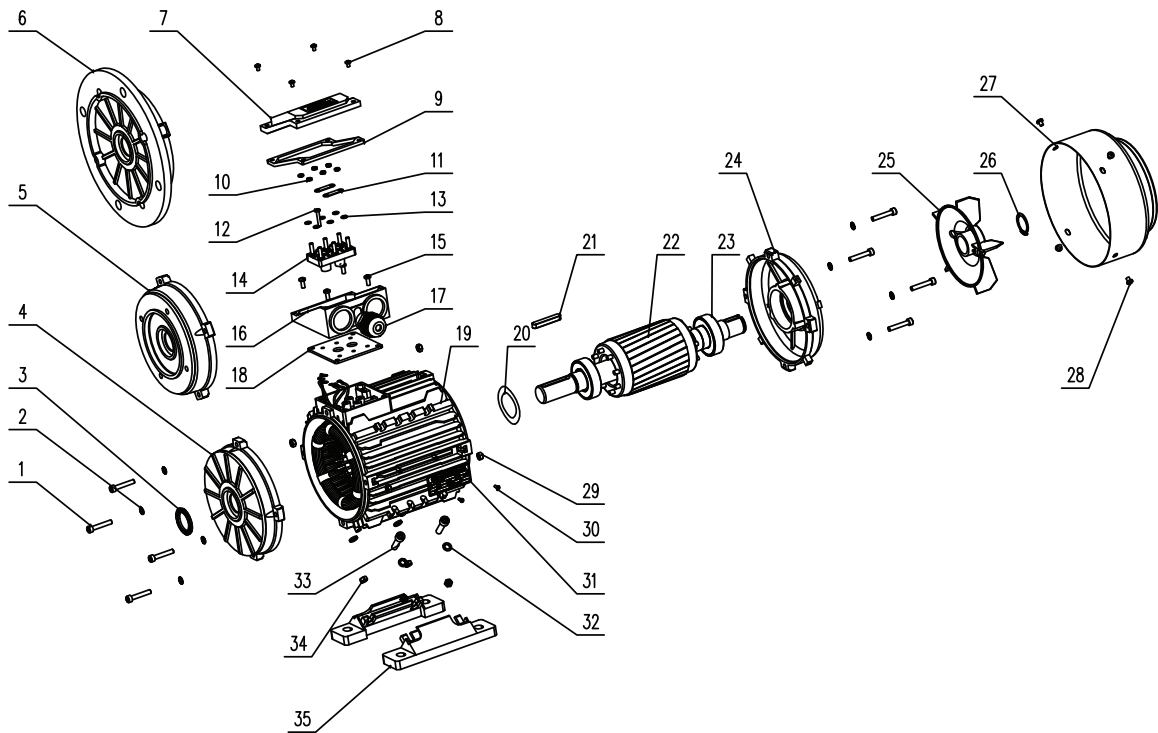


# Various Certificates



UL

# Motor Spare Part List "Exploded Drawing"



- |                              |                     |                            |
|------------------------------|---------------------|----------------------------|
| 1.screw                      | 13.Terminal shim    | 25.Cooling fan             |
| 2.Gasket                     | 14.Terminal board   | 26.Fan circlip             |
| 3.V-ring                     | 15.TB fixing screws | 27.Fan cover               |
| 4.Front endshield            | 16.TB base          | 28.Fan cover fixing screws |
| 5.B14 flange                 | 17.Cable gland      | 29.Endshield fixing nut    |
| 6.B5 flange                  | 18.TB bottomgasket  | 30.Rivet                   |
| 7.TB cover                   | 19.Frame            | 31.Rivet                   |
| 8.TB fixing screws           | 20.Preload washer   | 32.Foot fixing gasket      |
| 9.TB upper gasket            | 21.Key              | 33.Foot fixing screws      |
| 10.Terminal board fixing nut | 22.Rotor            | 34.Foot fixing nut         |
| 11.Terminal bridge           | 23.Bearing          | 35.Foot                    |
| 12.Terminal pin              | 24.NDE endshield    |                            |





## DC Series Fire Pump Motors' Main Performance Parameters(NEMA 380/415V 50HZ)

Serial NO.	Model NO.	Current (A) 380V	Current (A) 415V	Output (HP)	Hz/DC	Locked current A(standard) 380V	Locked current A(standard) 415V	Locked torque multiple (standard) %	Maximum torque multiple (standard) %	Minimum torque multiple (standard) %	Service factor	INS class	RPM	EFF %	Power factor
1	TDC254T15U2B	21.7	19.9	15	50	154	141	130	200	100	1.15	F	2920	87.6	0.9
2	TDC256T20U2B	28.5	26.1	20	50	194	177	130	200	100	1.15	F	2920	88.7	0.9
3	TDC284TS25U2B	35.4	32.5	25	50	243	222	130	200	100	1.15	F	2930	89.3	0.9
4	TDC286TS30U2B	42.3	38.7	30	50	289	264	130	200	100	1.15	F	2930	89.9	0.9
5	TDC286TS40U2B	55.2	50.6	40	50	387	354	125	200	100	1.15	F	2930	90.7	0.91
6	TDC324TS40U2B	55.2	50.6	40	50	387	354	125	200	100	1.15	F	2930	90.7	0.91
7	TDC324TS50U2B	68.7	62.9	50	50	482	441	120	200	100	1.15	F	2930	91.2	0.91
8	TDC326TS50U2B	68.7	62.9	50	50	482	441	120	200	100	1.15	F	2930	91.2	0.91
9	TDC326TS60U2B	81.9	75.0	60	50	578	529	120	200	100	1.15	F	2930	91.7	0.91
10	TDC364TS60U2B	81.9	75.0	60	50	578	529	120	200	100	1.15	F	2930	91.7	0.91
11	TDC364TS75U2B	100.9	92.4	75	50	722	661	105	200	95	1.15	F	2940	92.1	0.92
12	TDC365TS75U2B	100.9	92.4	75	50	722	661	105	200	95	1.15	F	2940	92.1	0.92
13	TDC365TS100U2B	133.6	122.3	100	50	965	883	105	200	95	1.15	F	2940	92.7	0.92
14	TDC405TS100U2B	133.6	122.3	100	50	965	883	105	200	95	1.15	F	2940	92.7	0.92
15	TDC404TS125U2B	166.5	152.4	125	50	1207	1105	100	200	90	1.15	F	2940	93	0.92
16	TDC405TS150U2B	197.0	180.4	150	50	1441	1319	100	200	90	1.15	F	2940	93.3	0.93
17	TDC444TS125U2B	164.7	150.8	125	50	1207	1105	100	200	90	1.15	F	2940	93	0.93
18	TDC445TS150U2B	197.0	180.4	150	50	1441	1319	100	200	90	1.15	F	2940	93.3	0.93
19	TDC444TS200U2B	261.3	239.2	200	50	1927	1764	70	175	65	1.15	F	2940	93.8	0.93
20	TDC447TS200U2B	261.3	239.2	200	50	1927	1764	70	175	65	1.15	F	2940	93.8	0.93
21	TDC447TS300U2B	391.1	358.1	300	50	3026	2770	70	175	65	1.15	F	2940	94	0.93
22	TDC447TS350U2B	456.2	417.8	350	50	3542	3243	70	175	65	1.15	F	2940	94	0.93
23	TDC449TS250U2B	325.9	298.4	250	50	2534	2320	70	175	65	1.15	F	2940	94	0.93
24	TDC449TS300U2B	391.1	358.1	300	50	3026	2770	70	175	65	1.15	F	2940	94	0.93
25	TDC449TS350U2B	456.2	417.8	350	50	3542	3243	70	175	65	1.15	F	2940	94	0.93
26	TDC449TS400U2B	521.4	477.4	400	50	4046	3704	70	175	65	1.15	F	2940	94	0.93
27	TDC 254T15U4B	21.9	20.1	15	50	154	141	160	200	110	1.15	F	1440	87.6	0.89
28	TDC 256T20U4B	28.9	26.4	20	50	194	177	150	200	105	1.15	F	1445	88.7	0.89
29	TDC 284T25U4B	35.8	32.8	25	50	243	222	150	200	105	1.15	F	1450	89.3	0.89
30	TDC 286T30U4B	42.7	39.1	30	50	289	264	150	200	105	1.15	F	1460	89.9	0.89
31	TDC 324T40U4B	56.5	51.7	40	50	387	354	140	200	100	1.15	F	1460	90.7	0.89
32	TDC 326T50U4B	70.2	64.3	50	50	482	441	140	200	100	1.15	F	1470	91.2	0.89
33	TDC364T60U4B	83.8	76.7	60	50	578	529	140	200	100	1.15	F	1480	91.7	0.89
34	TDC365T75U4B	103.1	94.4	75	50	722	661	140	200	100	1.15	F	1480	92.1	0.9
35	TDC405T100U4B	136.6	125.1	100	50	965	883	125	200	100	1.15	F	1480	92.7	0.9
36	TDC405T125U4B	170.2	155.8	125	50	1207	1105	110	200	100	1.15	F	1480	93	0.9
37	TDC444T125U4B	170.2	155.8	125	50	1207	1105	110	200	100	1.15	F	1480	93	0.9
38	TDC444T150U4B	203.6	186.4	150	50	1441	1319	110	200	100	1.15	F	1480	93.3	0.9
39	TDC445T150U4B	203.6	186.4	150	50	1441	1319	110	200	100	1.15	F	1480	93.3	0.9
40	TDC445T200U4B	267.0	244.5	200	50	1927	1764	100	200	90	1.15	F	1480	93.8	0.91
41	TDC447T200U4B	267.0	244.5	200	50	1927	1764	100	200	90	1.15	F	1480	93.8	0.91
42	TDC447T250U4B	333.0	305.0	250	50	2534	2320	80	175	75	1.15	F	1480	94	0.91
43	TDC449T250U4B	333.0	305.0	250	50	3026	2320	80	175	75	1.15	F	1480	94	0.91
44	TDC449T300U4B	399.7	365.9	300	50	3026	2770	80	175	75	1.15	F	1480	94	0.91
45	TDC449T350U4B	466.3	426.9	350	50	3542	3243	80	175	75	1.15	F	1480	94	0.91
46	TDC 254T7.5U6B	13.2	12.1	7.5	50	84	77	150	200	105	1.15	F	955	83.1	0.78
47	TDC 256T10U6B	15.4	14.1	10	50	107	98	150	200	105	1.15	F	960	84.7	0.78
48	TDC 284T15U6B	25.0	22.9	15	50	154	141	140	200	100	1.15	F	960	86.4	0.79
49	TDC 286T20U6B	32.9	30.1	20	50	194	177	135	200	100	1.15	F	965	87.7	0.79
50	TDC 324T25U6B	40.7	37.3	25	50	243	222	135	200	100	1.15	F	965	88.6	0.79
51	TDC 326T30U6B	48.5	44.4	30	50	289	264	135	200	100	1.15	F	975	89.2	0.79
52	TDC364T40U6B	63.2	57.8	40	50	387	354	135	200	100	1.15	F	975	90.2	0.8
53	TDC365T50U6B	78.4	71.8	50	50	482	441	135	200	100	1.15	F	980	90.8	0.8
54	TDC404T60U6B	93.5	85.6	60	50	578	529	135	200	100	1.15	F	980	91.4	0.8
55	TDC405T75U6B	114.8	105.1	75	50	722	661	135	200	100	1.15	F	980	91.9	0.81
56	TDC444T100U6B	151.9	139.1	100	50	965	883	125	200	100	1.15	F	980	92.6	0.81
57	TDC445T125U6B	189.3	173.3	125	50	1207	1105	125	200	100	1.15	F	980	92.9	0.81
58	TDC447T150U6B	226.2	207.1	150	50	1441	1319	120	200	100	1.15	F	980	93.3	0.81
59	TDC449T200U6B	300.0	274.7	200	50	1927	1764	120	175	100	1.15	F	980	93.8	0.81
60	TDC449T250U6B	374.2	342.6	250	50	2534	2320	100	175	90	1.15	F	980	94	0.81



[www.techtop.com](http://www.techtop.com)

**Shanghai Halotop Import and Export Co., Ltd.  
Global Power Engineering Co., Ltd.**

**Middle East & Africa - Sales & Service Center**

Showroom No.EAD 01-02-03, Dragon Mart, International City,

P.O.Box 299805, Dubai, United Arab Emirates

Tel: 00971-4-3687049 Fax: 00971-4-4273133

Mobile: 00971-50-5586802

Email: [halotop@126.com](mailto:halotop@126.com)