

ECHTOP[®]

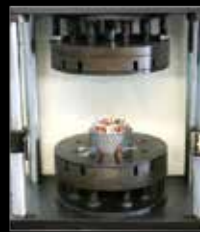
MOTOR

New! Fire Pump Motor Ready

SHANGHAI TOP MOTOR CO.,LTD.

SHANGHAI HALOTOP IMPORT & EXPORT CO., LTD.
GLOBAL POWER ENGINEERING CO. LTD.





WORKSHOP & TECHNOLOGY

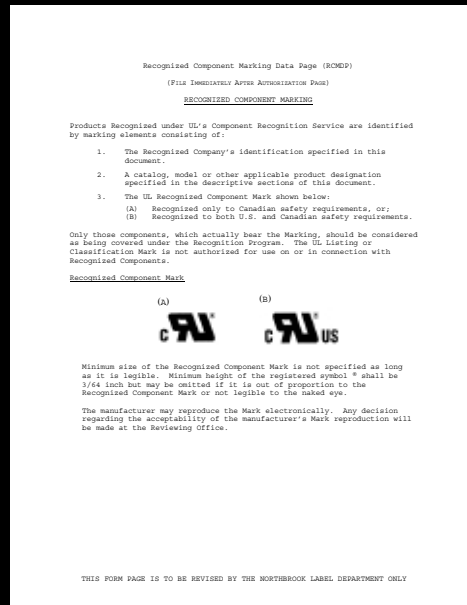
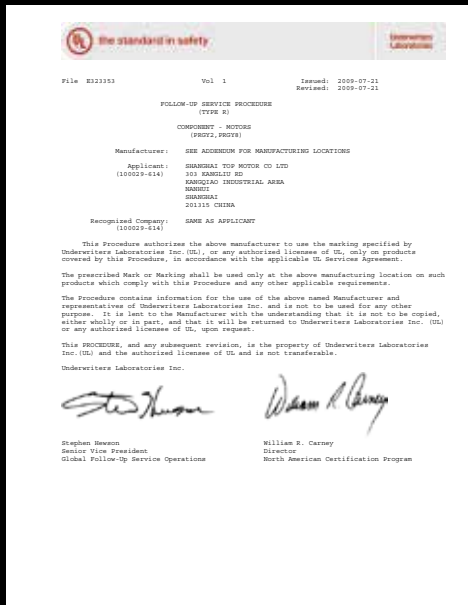
TECHTOP adopts computerized machine tools for metal parts; four cylinder oil hydraulic presses for stator stacking; vacuum high-pressure varnishing units for stator varnishing; clean-dry and auto-phosphorescing machines for motor housing, end shield, fan cover and other parts; electrostatic spraying-water screen-suspending line complexes for product surface painting.



Various Certificates



ISO9001



UL



Various Certificates

CERTIFICATE OF COMPLIANCE

Certificate Number: 20150114-EK26635
Report Reference: EX26635-20141231
Issue Date: 2015-JANUARY-14

Issued to: SHANGHAI TOP MOTOR CO LTD
303 KANGLUJ RD, KANGQIAO INDUSTRIAL AREA,
NANHUI, SHANGHAI 201315 CHINA

This is to certify that representative samples of FIRE PUMP MOTORS
T Series, TXD Series, TDC Series, TXA Series, TXD
Series: See Addendum Page below for Models

Have been investigated by UL in accordance with the
Standard(s) indicated on this Certificate.

Standard(s) for Safety: UL 1004-1, Rotating Electrical Machines - General
Requirements, UL 1004-5, Fire Pump Motors

Additional Information: See the UL Online Certifications Directory at
www.ul.com/SAMBase for additional information

Only those products bearing the UL Certification Mark should be considered as being covered by UL's
Certification and Follow-Up Service.

Look for the UL Certification Mark on the product.

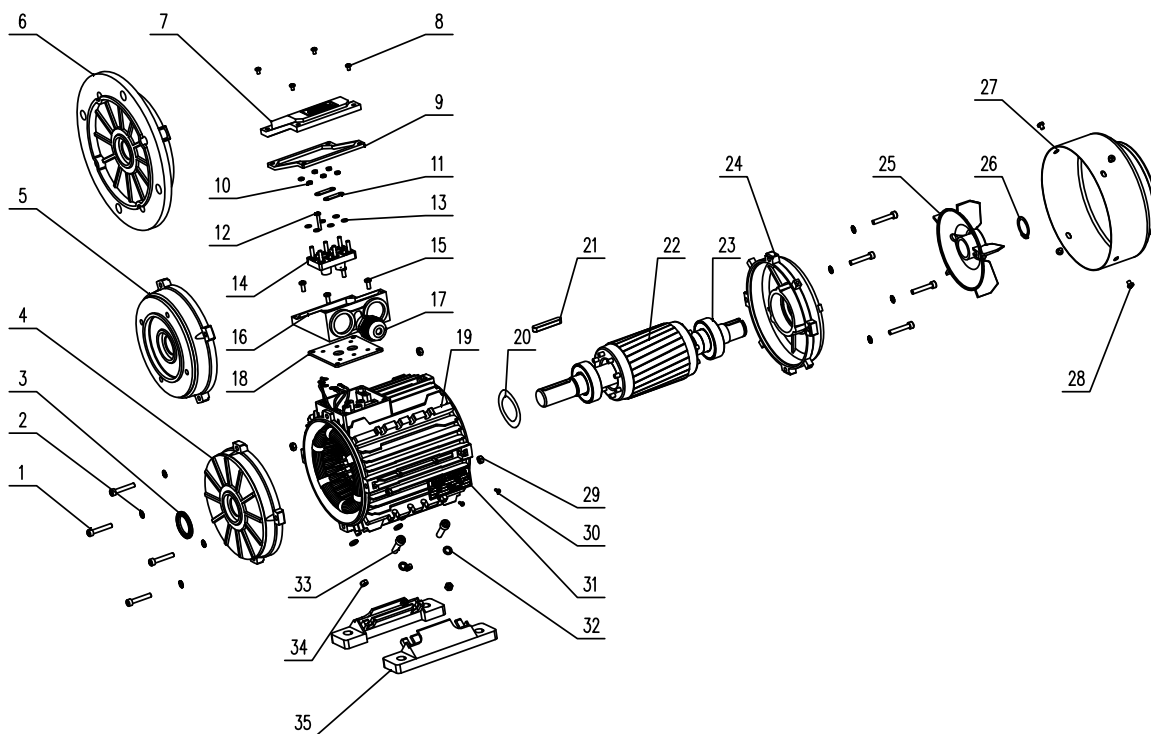

Barry
UL
UL is a registered service mark of UL LLC, a subsidiary of UL Corporation, 330 South Dearborn Street, Chicago, IL 60606, USA. UL is not responsible for the accuracy of the information provided on this certificate. The information provided on this certificate is for informational purposes only. For additional information, please contact your local UL representative at 1-800-368-5868.



Page 1 of 2

UL

Motor Spare Part List "Exploded Drawing"



- | | | |
|------------------------------|---------------------|----------------------------|
| 1.screw | 13.Terminal shim | 25.Cooling fan |
| 2.Gasket | 14.Terminal board | 26.Fan circlip |
| 3.V-ring | 15.TB fixing screws | 27.Fan cover |
| 4.Front endshield | 16.TB base | 28.Fan cover fixing screws |
| 5.B14 flange | 17.Cable gland | 29.Endshield fixing nut |
| 6.B5 flange | 18.TB bottomgasket | 30.Rivet |
| 7.TB cover | 19.Frame | 31.Rivet |
| 8.TB fixing screws | 20.Preload washer | 32.Foot fixing gasket |
| 9.TB upper gasket | 21.Key | 33.Foot fixing screws |
| 10.Terminal board fixing nut | 22.Rotor | 34.Foot fixing nut |
| 11.Terminal bridge | 23.Bearing | 35.Foot |
| 12.Terminal pin | 24.NDE endshield | |

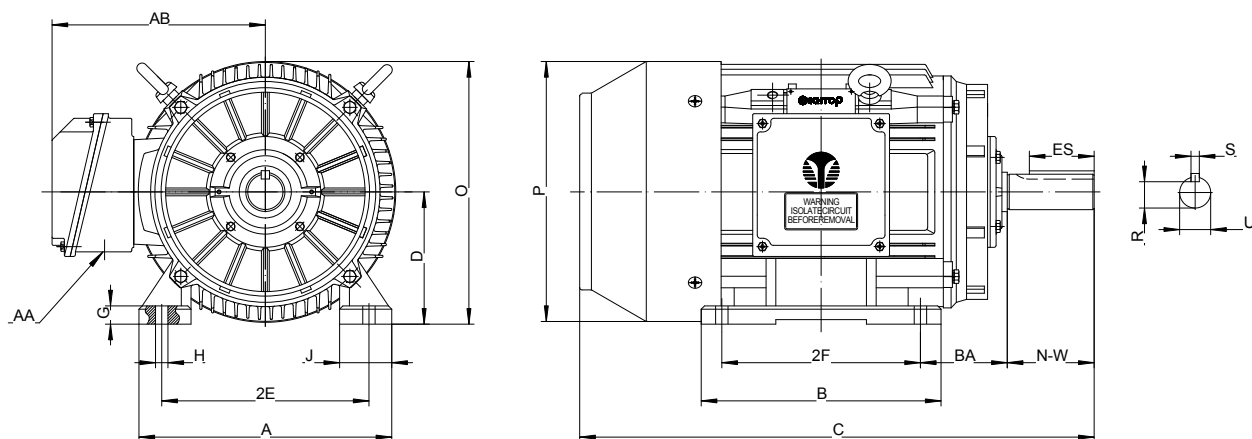


TXC Serie Fire Pump Motors' Main Performance Parameters (NEMA 50Hz)

TEFC Enclosure - IP55

Serial NO.	Model NO.	Current (A) 380V	Current (A) 415V	Output (HP)	Hz/DC	Locked current A (standard) 380V	Locked current A(standard) 415V	Locked torque multiple (standard) %	Maximum torque multiple (standard) %	Minimum torque multiple (standard) %	Service factor	INS class	RPM	EFF %	Power factor
1	TXC 143T1U2B	1.8	1.6	1	50	20	18.3	175	250	120	1.15	F	2875	72.1	0.88
2	TXC 143T1.5U2B	2.6	2.4	1.5	50	27	24.7	175	250	120	1.15	F	2875	75	0.88
3	TXC 145T2U2B	3.3	3.0	2	50	34	31.1	170	240	120	1.15	F	2875	77.2	0.89
4	TXC 182T3U2B	4.8	4.4	3	50	43	39.4	160	230	110	1.15	F	2925	79.7	0.89
5	TXC 184T5U2B	7.9	7.2	5	50	61	55.9	150	215	105	1.15	F	2925	81.5	0.89
6	TXC 213T7.5U2B	11.3	10.4	7.5	50	84	76.9	140	200	100	1.15	F	2933	84.7	0.89
7	TXC 215T10U2B	14.9	13.6	10	50	107	98.0	135	200	100	1.15	F	2933	86	0.89
8	TXC 254T15U2B	21.7	19.9	15	50	154	141.0	130	200	100	1.15	F	2950	87.6	0.9
9	TXC 256T20U2B	28.5	26.1	20	50	194	177.6	130	200	100	1.15	F	2950	88.7	0.9
10	TXC 284TS25U2B	35.4	32.5	25	50	243	222.5	130	200	100	1.15	F	2958	89.3	0.9
11	TXC 286TS30U2B	42.3	38.7	30	50	289	264.6	130	200	100	1.15	F	2958	89.9	0.9
12	TXC 324TS40U2B	55.2	50.6	40	50	387	354.4	125	200	100	1.15	F	2967	90.7	0.91
13	TXC 326TS50U2B	68.7	62.9	50	50	482	441.3	120	200	100	1.15	F	2967	91.2	0.91
14	TXC364TS60U2B	81.9	75.0	60	50	578	529.3	120	200	100	1.15	F	2967	91.7	0.91
15	TXC365TS75U2B	100.9	92.4	75	50	722	661.1	105	200	95	1.15	F	2967	92.1	0.92
16	TXC405TS100U2B	133.6	122.3	100	50	965	883.6	105	200	95	1.15	F	2975	92.7	0.92
17	TXC444TS125U2B	166.5	152.4	125	50	1207	1105.2	100	200	90	1.15	F	2979	93	0.92
18	TXC445TS150U2B	197.0	180.4	150	50	1441	1319.5	100	200	90	1.15	F	2979	93.3	0.93
19	TXC447TS200U2B	262.1	240.0	200	50	1927	1764.5	100	200	90	1.15	F	2979	93.5	0.93
20	TXC449TS250U2B	326.6	299.0	250	50	2534	2320.3	70	175	65	1.15	F	2979	93.8	0.93
21	TXC449TS300U2B	391.1	358.1	300	50	3026	2770.8	70	175	65	1.15	F	2979	94	0.93
22	TXC586/7TS350U2B	456.2	417.8	350	50	3542	3243.3	70	175	65	1.15	F	2980	94	0.93
23	TXC586/7TS400U2B	521.4	477.4	400	50	4046	3704.8	70	175	65	1.15	F	2981	94	0.93
24	TXC586/7TS450U2B	586.6	537.1	450	50	4539	4156.2	70	175	65	1.15	F	2982	94	0.93
25	TXC 143T1U4B	1.8	1.6	1	50	20	18.3	275	300	190	1.15	F	1442	72.1	0.88
26	TXC 145T1.5U4B	2.6	2.4	1.5	50	27	24.7	250	280	175	1.15	F	1442	75	0.88
27	TXC 145T2U4B	3.4	3.1	2	50	34	31.1	235	270	165	1.15	F	1442	77.2	0.88
28	TXC 182T3U4B	4.9	4.5	3	50	43	39.4	215	250	150	1.15	F	1446	79.7	0.88
29	TXC 184T5U4B	7.9	7.3	5	50	61	55.9	185	225	130	1.15	F	1446	81.5	0.88
30	TXC 213T7.5U4B	11.5	10.5	7.5	50	84	76.9	175	215	120	1.15	F	1450	84.7	0.88
31	TXC 215T10U4B	15.1	13.8	10	50	107	98.0	165	200	115	1.15	F	1450	86	0.88
32	TXC 254T15U4B	21.9	20.1	15	50	154	141.0	160	200	110	1.15	F	1458	87.6	0.89
33	TXC 256T20U4B	28.9	26.4	20	50	194	177.6	150	200	105	1.15	F	1458	88.7	0.89
34	TXC 284T25U4B	35.8	32.8	25	50	243	222.5	150	200	105	1.15	F	1467	89.3	0.89
35	TXC 286T30U4B	42.7	39.1	30	50	289	264.6	150	200	105	1.15	F	1467	89.9	0.89
36	TXC 324T40U4B	56.5	51.7	40	50	387	354.4	140	200	100	1.15	F	1475	90.7	0.89
37	TXC 326T50U4B	70.2	64.3	50	50	482	441.3	140	200	100	1.15	F	1475	91.2	0.89
38	TXC364T60U4B	83.8	76.7	60	50	578	529.3	140	200	100	1.15	F	1479	91.7	0.89
39	TXC365T75U4B	103.1	94.4	75	50	722	661.1	140	200	100	1.15	F	1479	92.1	0.9
40	TXC405T100U4B	136.6	125.1	100	50	965	883.6	125	200	100	1.15	F	1483	92.7	0.9
41	TXC444T125U4B	168.3	154.1	125	50	1207	1105.2	110	200	100	1.15	F	1483	93	0.91
42	TXC445T150U4B	201.3	184.3	150	50	1441	1319.5	110	200	100	1.15	F	1483	93.3	0.91
43	TXC447T200U4B	267.9	245.3	200	50	1927	1764.5	100	200	90	1.15	F	1483	93.5	0.91
44	TXC449T250U4B	333.8	305.6	250	50	2534	2320.3	80	175	75	1.15	F	1483	93.8	0.91
45	TXC449T300U4B	399.7	365.9	300	50	3026	2770.8	80	175	75	1.15	F	1484	94	0.91
46	TXC586/7T350U4B	466.3	426.9	350	50	3542	3243.3	80	175	75	1.15	F	1485	94	0.91
47	TXC586/7T400U4B	532.9	487.9	400	50	4046	3704.8	80	175	75	1.15	F	1486	94	0.91
48	TXC586/7T450U4B	599.5	548.9	450	50	4539	4156.2	80	175	75	1.15	F	1487	94	0.91
49	TXC 145T1U6B	2.1	2.0	1	50	20	18.3	170	265	120	1.15	F	958	70	0.76
50	TXC 182T1.5U6B	3.0	2.8	1.5	50	27	24.7	165	250	115	1.15	F	958	72.9	0.77
51	TXC 184T2U6B	3.9	3.6	2	50	34	31.1	160	240	110	1.15	F	958	75.2	0.77
52	TXC 213T3U6B	5.7	5.2	3	50	43	39.4	155	230	110	1.15	F	958	77.7	0.77
53	TXC 215T5U6B	9.3	8.5	5	50	61	55.9	150	215	105	1.15	F	967	79.7	0.77
54	TXC 254T7.5U6B	13.4	12.2	7.5	50	84	76.9	150	200	105	1.15	F	967	83.1	0.77
55	TXC 256T10U6B	17.5	16.0	10	50	107	98.0	150	200	105	1.15	F	971	84.7	0.77
56	TXC 284T15U6B	25.4	23.2	15	50	154	141.0	140	200	100	1.15	F	971	86.4	0.78
57	TXC 286T20U6B	33.3	30.5	20	50	194	177.6	135	200	100	1.15	F	975	87.7	0.78
58	TXC 324T25U6B	40.7	37.3	25	50	243	222.5	135	200	100	1.15	F	975	88.6	0.79
59	TXC 326T30U6B	48.5	44.4	30	50	289	264.6	135	200	100	1.15	F	979	89.2	0.79
60	TXC364T40U6B	63.2	57.8	40	50	387	354.4	135	200	100	1.15	F	979	90.2	0.8
61	TXC365T50U6B	78.4	71.8	50	50	482	441.3	135	200	100	1.15	F	983	90.8	0.8
62	TXC404T60U6B	93.5	85.6	60	50	578	529.3	135	200	100	1.15	F	983	91.4	0.8
63	TXC405T75U6B	114.8	105.1	75	50	722	661.1	135	200	100	1.15	F	983	91.9	0.81
64	TXC444T100U6B	151.9	139.1	100	50	965	883.6	125	200	100	1.15	F	983	92.6	0.81
65	TXC445T125U6B	189.3	173.3	125	50	1207	1105.2	125	200	100	1.15	F	983	92.9	0.81
66	TXC447T150U6B	226.2	207.1	150	50	1441	1319.5	120	200	100	1.15	F	983	93.3	0.81
67	TXC449T200U6B	300.9	275.5	200	50	1927	1764.5	120	200	100	1.15	F	983	93.5	0.81
68	TXC586/7T250U6B	375.0	343.3	250	50	2534	2320.3	100	175	90	1.15	F	983	93.8	0.81
69	TXC586/7T300U6B	449.0	411.1	300	50	3026	2770.8	100	175	90	1.15	F	983	94	0.81
70	TXC586/7T350U6B	523.8	479.6	350	50	3542	3243.3	100	175	90	1.15	F	983	94	0.81
71	TXC586/7T400U6B	598.7	548.2	400	50	4046	3704.8	100	175	90	1.15	F	983	94	0.81

F -TXC Series NEMA Motor



Foot Mounted Figure 1

Overall & Installation Dimensions

Frame	Foot Mounting								Shaft					General										
	A	B	G	J	2E	2F	H	BA	N-W	U	S	R	ES	C	D	O	AA	AB	P					
143T	7	5.12	0.55	1.46	5.5	4	0.34	2.25	2.25	0.875	0.188	0.771	1.41	13	3.5	7.01	3/4	5.9	6.93					
145T		6.1				5								14										
182T	9	6.1	0.675	1.77	7.5	4.5	0.41	2.75	2.75	1.125	0.25	0.986	1.78	15.5	4.5	8.83	3/4	7.17	8.66					
184T		7.09				5.5								16.5										
213T	10.27	7.48	0.71	1.81	8.5	5.5	0.41	3.5	3.38	1.375	0.312	1.201	2.42	18.78	5.25	10.35	1	7.95	10.2					
215T		8.98				7								20.28										
254T	12.36	10.35	0.63	2.36	10	8.25	0.53	4.25	4	1.625	0.375	1.416	2.91	24	6.25	12.44	1-1/4	10.1	12.36					
256T		12.05				10								25.73										
284T	13.8	12.2	0.985	2.95	11	9.5	0.53	4.75	4.62	1.875	0.5	1.591	3.28	27.37	7	13.9	1-1/2	10.83	13.78					
286T		13.7				11								28.87										
284TS	13.8	12.2	0.985	2.95	11	9.5	0.53	4.75	3.25	1.625	0.375	1.416	1.91	26	7	13.9	1-1/2	10.83	13.78					
286TS		13.7				11								27.5										
324T	15.4	13	1.12	3.15	12.5	10.5	0.66	5.25	5.25	2.125	0.5	1.845	3.91	29.8	8	15.9	2	13	15.71					
326T		14.5				12								31.3										
324TS	15.4	13	1.12	3.15	12.5	10.5	0.66	5.25	3.75	1.875	0.5	1.591	2.03	28.3	8	15.9	2	13	15.71					
326TS		14.5				12								29.8										
364T	17.17	14.2	1.24	3.15	14	11.25	0.66	5.88	5.88	2.375	0.625	2.021	4.28	33.47	9	18	3	14.2	18.07					
365T		15.2				12.25								34.47										
364TS	17.17	14.2	1.24	3.15	14	11.25	0.66	5.88	3.75	1.875	0.5	1.591	2.03	31.34	9	18	3	14.2	18.07					
365TS		15.2				12.25								32.34										
404T	19.06	17.44	1.33	3.15	16	12.25	0.81	6.62	7.25	2.875	0.75	2.45	5.65	37.76	10	20	3	15.3	19.96					
405T						13.75								4.25						2.125	0.5	1.845	2.78	34.77
405TS						13.75																		4.25
444T	21.93	20.08	1.315	3.94	18	14.5	0.81	7.5	8.5	3.375	0.875	2.88	6.91	44.05	11	22	3	18	22.01					
445T						16.5								44.05										
444TS	21.93	20.08	1.315	3.94	18	14.5	0.81	7.5	4.75	2.375	0.625	2.021	3.03	40.3										
445TS						16.5								40.3										
447T	21.93	28.6	1.315	3.94	18	20	0.81	7.5	8.5	3.375	0.875	2.88	6.91	52.55	11	22	3	18	22.01					
449T						25								52.55										
447TS						20								52.55										
449TS	25	48.8																						

**Shanghai Halotop Import and Export Co., Ltd.
Global Power Engineering Co., Ltd.**

Middle East & Africa - Sales & Service Center

Showroom No.EAD 01-02-03, Dragon Mart, International City,

P.O.Box 299805, Dubai, United Arab Emirates

Tel: 00971-4-3687049 Fax: 00971-4-4273133

Mobile: 00971-50-5586802

Email: halotop@126.com