

Shipping Weight & Dimensions

Starting Voltage	Wall Mount		Floor Mount	
	Approx. dimensions in inches (mm)	Approx. Weight in Lbs (kg)	Approx. dimensions in inches (mm)	Approx. Weight in Lbs (kg)
12V.DC	27 ⁵ / ₈ " h x 27 ¹ / ₈ " w x 9" d (700 x 600 x 228)	70 (32)	47 ¹ / ₈ " h x 27 ¹ / ₈ " w x 9" d (1208 x 600 x 228)	95 (43)
24V.DC				



Diesel Engine Fire Pump Controllers



Standard Features

- ViZiTouch operator interface
- NEMA 2 assembly
- Pressure and event recorder
- Battery voltage and amperage display
- Run Test push button
- HAND - OFF - AUTO selector switch
- Manual crank pushbuttons (2)
- Stop pushbutton
- Remote start / deluge valve start provision
- Pressure transducer and run test solenoid valve externally mounted
- Gland plate
- Audible alarm
- Alarm contacts for remote indication
- Weekly exercise programmable time clock
- Crank cycle
- Programmable automatic shutdown (minimum run timer)
- Programmable sequential start timer (delay start timer)



Americas

Tornatech Inc.
Head Office
 7075, Pl. Robert-Joncas
 Suite # 132
 Montreal, Canada
 H4M 2Z2
 Tel.: + 1 514 334 0523
 + 1 800 363 8448
 Fax: + 1 514 334 5448

USA Sales Representatives
 Toll Free: + 1 800 363-8448
 Cincinnati, Ohio
 Cell: + 1 513 307 6766
 Birmingham, Alabama
 Cell: + 1 205 902 9331
Latin America Sales Representative
 Tel.: + 1 514 334 0523
 Cell: + 1 514 945 4067

Europe

Tornatech S.P.R.L.
 Avenue Sabin 3
 1300 Wavre
 Belgium
 Tel.: + 32 (0) 10 84 40 01
 Fax: + 32 (0) 10 24 75 05

Middle East

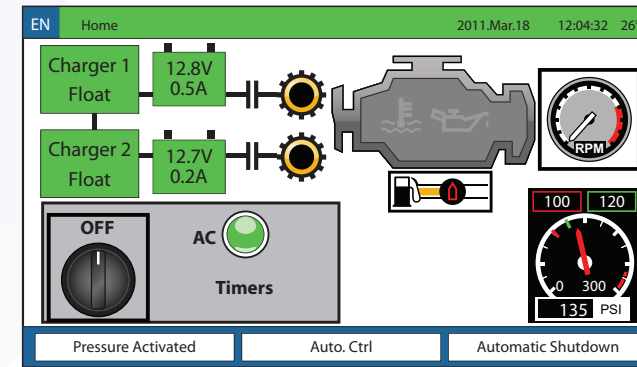
Tornatech FZE
 Warehouse RA08CC04
 Jebel Ali North
 PO Box 18435
 Dubai,
 United Arab Emirates
 Tel.: + 971 (0)4 887 0615
 Fax.: + 971 (0)4 887 0604

Asia

Tornatech Pte Ltd.
 3 Soon Lee Street #05-33
 Pioneer Junction
 Singapore 627606
 Tel.: + 65 6795 8114
 + 65 6795 7823
 Fax: + 65 6795 3201



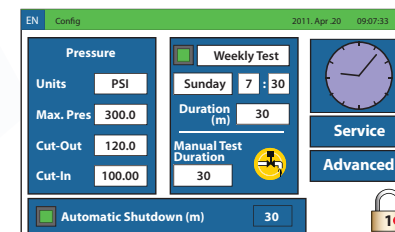
Diesel Fire Pump Controller



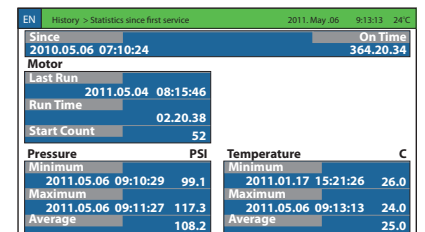
ViZiTouch operator interface for Diesel Fire Pump Controllers

- Major features include:
- Touch screen operation with 4.2" color display and intuitive graphics
 - Expandable storage
 - Multi-language
 - Upgradable software
 - Password protected

Settings



History/Statistics



Events

Date	Time	Message
291	2011.04.14	16:36:34 Engine Trouble RTN
292	2011.04.14	16:36:33 Engine High Coolant Temp ACT
293	2011.04.14	16:36:33 Engine Trouble ACT
294	2011.04.14	16:36:20 Engine Started 0
295	2011.04.14	16:35:29 HOA in AUTO position
296	2011.04.14	16:35:27 Engine Stopped 0
297	2011.04.14	16:35:03 Engine Started 0
298	2011.04.14	16:34:53 HOA in OFF/MANUAL position
299	2011.04.14	16:34:53 HOA in AUTO position
300	2011.04.14	16:34:43 HOA in OFF/MANUAL position

Service

EN Config > Advanced > Service 2011.Apr.20 10:13:50 20°C

info@tornatech.com

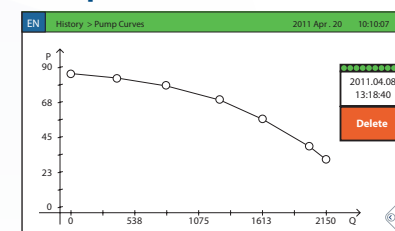
The Americas: +1 800 363 8448 +65 6795 8114

Middle East: +971 508574639 Europe: +32 (0)1084 4001

Last Pump Curve: 2011.04.08 13:18:40

Service Done Last Done: 2011.04.20 + 1/2 year Next On: 2011.10.20

Pump Curves



Pressure Curves

