

GPx Models / Starting Methods

	ACROSS-THE-LINE	PART WINDING	AUTO TRANSFORMER	SOFT START SOFT STOP	PRIMARY RESISTOR	WYE-DELTA CLOSED TRANSITION	WYE-DELTA OPEN TRANSITION
MODELNUMBER	GPA	GPP	GPR	GPS	GPV	GPW	GPY
VOLTAGE	FULL	REDUCED	REDUCED	REDUCED	REDUCED	REDUCED	REDUCED
TYPICAL VOLTAGE APPLIED MOTOR STARTING	100%	100%	65%	30% (adjustable)	70%	100%	100%
INRUSH CURRENT	6 X FULL LOAD CURRENT	60% OF FULL LOAD CURRENT WITH 1ST WINDING	42% OF FULL LOAD CURRENT	30% OF FULL LOAD CURRENT (adjustable)	50% OF FULL LOAD CURRENT	33% OF FULL LOAD CURRENT	33% OF FULL LOAD CURRENT
STARTING TORQUE	100%	48%	42%	30%	50%	33%	33%
MOTOR TYPE	STANDARD	SPECIAL	STANDARD	STANDARD	STANDARD	SPECIAL	SPECIAL
# OF WIRE CONNECTIONS	3 WIRE	6 WIRE	3 WIRE	3 WIRE	3 WIRE	6 WIRE	6 WIRE

Based on NEMA B type motors.

GPx Series / Voltage / HP / Short Circuit Withstand Rating / Seismic Certification

Model	Voltage	HP	Short Circuit Withstand Rating	Seismic Certified
GPA GPA+GPU	200V - 208V	5-150	100kA	Yes
		200	50kA	No
	220V - 240V	5-200	100kA	Yes
		250	50kA	No
GPP GPP+GPU	380V - 416V	5-300	100kA	Yes
		350-450	50kA	No
GPY GPY+GPU	440V - 480V	5-400	100kA	Yes
		450	50kA	No
	575V - 600V	5-500	50kA	Yes
GPR GPR+GPU	200V - 208V	5-150	100kA	Yes
		200	50kA	No
	220V - 240V	5-200	100kA	Yes
		250	50kA	No
	380V - 416V	5-300	100kA	Yes
		350-450	50kA	No
	440V - 480V	5-400	100kA	Yes
		450	50kA	No
575V - 600V	5-500	50kA	Yes	
GPS GPS+GPU	200V - 208V	5-100	100kA	Yes
		150	50kA	No
		200	50kA	No
		250	50kA	No
	220V - 240V	5-150	100kA	Yes
		200	50kA	No
		250	50kA	No
	380V - 416V	5-250	100kA	Yes
		300	100kA	No
		350-450	50kA	No
	440V - 480V	5-300	100kA	Yes
		350	100kA	No
400		100kA	No	
450		100kA	No	
500		100kA	No	
575V - 600V	5-400	50kA	Yes	
	450	50kA	No	
	500	50kA	No	



Full Service - Electric Fire Pump Controllers



Standard Features

- ViZiTouch operator interface
- NEMA 2 assembly
- Pressure and event recorder
- Voltage and amperage display
- Single operator for both isolating switch and circuit breaker
- Surge arrestor
- Lifting lugs
- Run test push button
- Available with automatic power transfer switch
- Emergency start handle
- Start and stop pushbuttons
- Locked rotor protector
- Phase reversal indication
- Remote start / deluge valve start provision
- Pressure transducer and run test solenoid valve externally mounted
- Gland plate
- Audible alarm
- Alarm contacts for remote indication
- Available with full voltage and reduced voltage starting

Americas

Europe

Middle East

Asia

**Tornatech Inc.
Head Office**

7075, Pl. Robert-Joncas
Suite # 132
Montreal, Canada
H4M 2Z2
Tel.: + 1 514 334 0523
+ 1 800 363 8448
Fax: + 1 514 334 5448

**USA Sales
Representatives**

Toll Free: + 1 800 363-8448
Cincinnati, Ohio
Cell: + 1 513 307 6766
Birmingham, Alabama
Cell: + 1 205 902 9331

**Latin America
Sales Representative**
Tel.: + 1 514 334 0523
Cell: + 1 514 945 4067

Tornatech S.P.R.L.

Avenue Sabin 3
1300 Wavre
Belgium
Tel.: + 32 (0) 10 84 40 01
Fax: + 32 (0) 10 24 75 05

Tornatech FZE

Warehouse RA08CC04
Jebel Ali North
PO Box 18435
Dubai,
United Arab Emirates
Tel.: + 971 (0)4 887 0615
Fax.: + 971 (0)4 887 0604

Tornatech Pte Ltd.

3 Soon Lee Street #05-33
Pioneer Junction
Singapore 627606
Tel.: + 65 6795 8114
+ 65 6795 7823
Fax: + 65 6795 3201

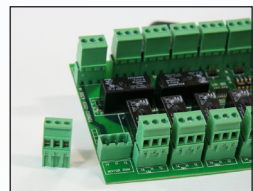




• Alarm bell



• Externally mounted pressure transducer and run test solenoid valve with protective cover



• Remote alarm contacts with removable terminals



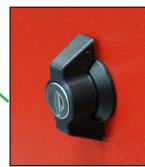
• Lifting Lugs



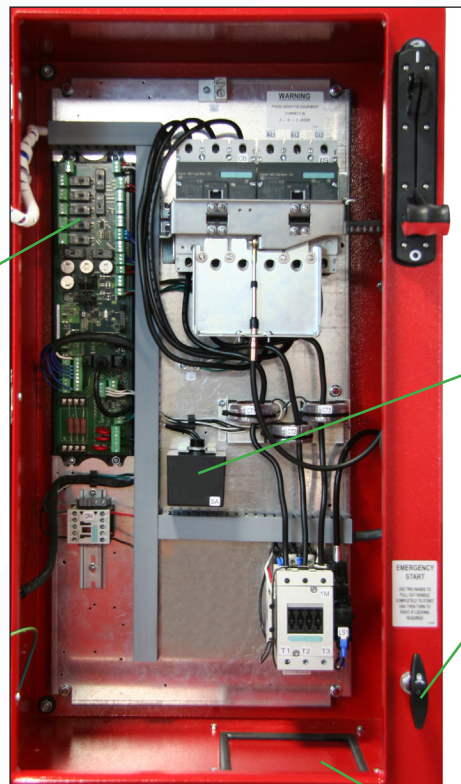
• Exterior USB Port (Interior USB port also supplied)



• Custom designed IS/CB operator handle



• Key lock



• Surge arrester

• Custom designed emergency start mechanism with integrated limit switch

GPA model shown

• Gland plate

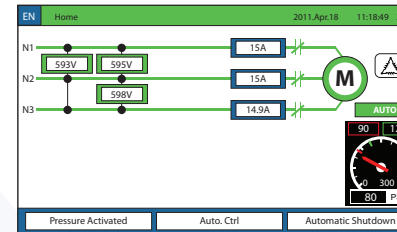


• ViZiTouch operator interface

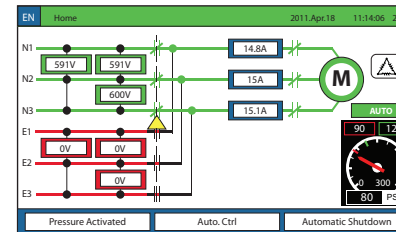


GPW + GPU model shown

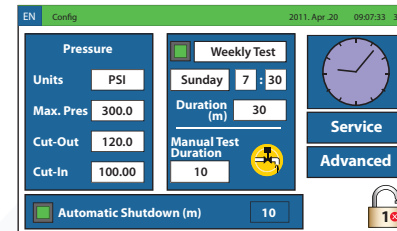
Electric Fire Pump Controller



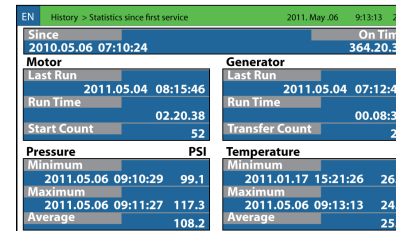
Electric Fire Pump Controller with Transfer Switch



Settings



History/Statistics



Events

Date	Time	Message
2011.07.22	14:18:20	User 9 Logger In
2011.07.22	15:59:27	Under Voltage OCCURED
2011.07.22	13:59:27	Under Voltage INACTIVE
2011.07.22	13:58:21	IO Exp1 Comm Error ACTIVE
2011.07.22	13:54:25	Alarms Resetted
2011.07.22	13:54:05	Alt. IS Tripped/Open OCCURED
2011.07.22	13:54:05	Control Voltage Returned
2011.07.22	13:54:05	User 9 Logger Off
2011.07.22	13:54:05	Alarms Resetted
2011.07.22	13:54:05	IO Tr.Sw. Comm Error OCCURED

Service

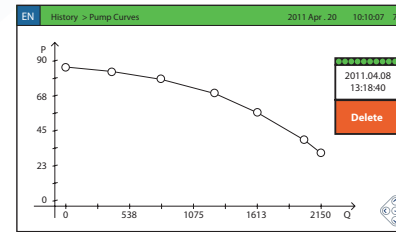
info@tornatech.com

The Americas: +1 800 363 8448, +514 334 0523
 Middle East: +971 508574639
 Asia: +65 6795 8114
 Europe: +32 (0)1084 4001

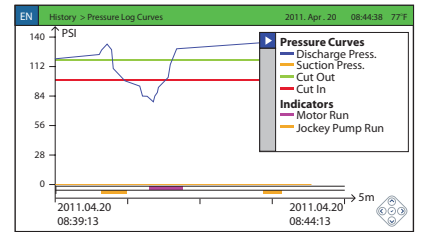
Last Pump Curve: 2011.04.08 13:18:40

Service Done: 2011.04.20 + 1/2 year = 2011.10.20

Pump Curves



Pressure Curves



ViZiTouch major features include:

- Touch screen operation with 4.2" color display and intuitive graphics
- Expandable storage
- Multi-language
- Upgradable software
- Password protected

• Automatic power transfer switch