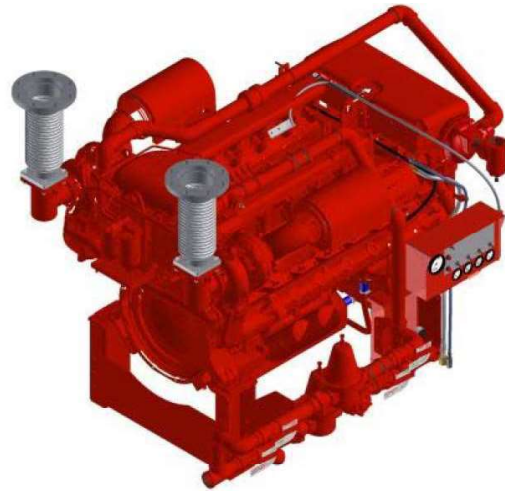


FM-UL-cUL APPROVED RATINGS BHP/KW

DT2H MODEL	RATED SPEED							
	1470		1760		1900		2100	
UFAA60	725	541	805	600	836	623	880	656
UFAA98	825	615	982	732	1000	746		
UFAA92							1025	764

◆ All Models are available for Export

λ = Non-Emissionized



SPECIFICATIONS

ITEM	DT2H MODELS		
	UFAA60	UFAA98	UFAA92
Number of Cylinders		12	
Aspiration		TRWA	
Rotation*		CW	
Overall Dimensions – in. (mm)		68.8 (1748) H x 81.4 (2067) L x 57.7 (1466) W	
Crankshaft Centerline Height – in. (mm)		23.5 (597)	
Weight – lb (kg)		4500 (2040)	
Compression Ratio		14.3:1	
Displacement – cu. in. (l)		1338 (21.9)	
Engine Type		4 Cycle, 4 Valves per cylinder, V-type, Turbocharged & Intercooled	
Bore & Stroke – in. (mm)		5.04 x 5.59 (128 x 142)	
Installation Drawing		D649	
Wiring Diagram AC		C071613	
Wiring Diagram DC		C071842	
Speed Interpolation		None	

Abbreviations: CW – Clockwise TRWA – Turbocharged with Raw Water Aftercooling L – Length W – Width H – Height

*Rotation viewed from Heat Exchanger / Front of engine

CERTIFIED POWER RATING

- Each engine is factory tested to verify power and performance.

ENGINE RATINGS BASELINES

- Engines are to be used for stationary emergency standby fire pump service only. Engines are to be tested in accordance with NFPA 25.
- Engines are rated at standard SAE conditions of 29.61 in. (752.1 mm) Hg barometer and 77°F (25°C) inlet air temperature [approximates 300 ft. (91.4 m) above sea level] by the testing laboratory (see SAE Standard J 1349).
- A deduction of 3 percent from engine horsepower rating at standard SAE conditions shall be made for diesel engines for each 1000 ft. (305 m) altitude above 300 ft. (91.4 m)
- A deduction of 1 percent from engine horsepower rating as corrected to standard SAE conditions shall be made for diesel engines for every 10°F (5.6°C) above 77°F (25°C) ambient temperature.



ENGINE EQUIPMENT

EQUIPMENT	STANDARD	OPTIONAL
Air Cleaner	Direct Mounted, Washable, Indoor Service with Drip Shield	Disposable, Drip Proof, Indoor Service Outdoor Type, Single or Two Stage (Cyclonic)
Alarms	Overspeed Alarm & Shutdown, Low Oil Pressure, Low & High Coolant Temperature, High Raw Water Flow, High Raw Water Temperature	Low Coolant Level, Low Oil Level, Oil Filter Differential Pressure, Fuel Filter Differential Pressure, Air Filter Restriction
Alternator	24V-DC, 50 Amps with Dual (2) V-Belt Drive with Guard	
Coupling	Bare Flywheel	Falk 1100T Coupling; DT2H-UFAA60 – SC2160A, DT2H-UFAA92, 98 - SC2390 Non-Listed Driveshaft; Vertical Turbine Drive disc
Engine Heater	230V-AC, 2500 Watt (Qty. 2)	
Exhaust Flex Connection	Dual (2) SS Flex, 150# Flange Connection, 6" for DT2H-UFAA60 Dual (2) SS Flex, 150# Flange Connection, 8" for DT2H-UFAA92, DT2H-UFAA98	
Exhaust Protection	Water Cooled Manifold	
Flywheel Housing	SAE #1	
Flywheel Power Take Off	14.0" Industrial Flywheel Connection	
Fuel Connections	Fire Resistant, Flexible, USA Coast Guard Approved, Supply and Return Lines	
Fuel Filter	Primary and Secondary with By-Pass Valve	
Fuel Injection System	Direct Injection, Inline Pump	
Fuel Solenoid	24V-DC Energized to Stop	
Governor, Speed	Variable Speed, Mechanical	
Heat Exchanger	Tube and Shell Type, 60 PSI (4 BAR), NPT(F) Connections – Sea Water Compatible	
Instrument Panel	Tachometer, Hourmeter, Water Temperature, Oil Pressure and Two (2) Voltmeters, Front Opening	
Junction Box	Integral with Instrument Panel; For DC Wiring Interconnection to Engine Controller	
Lube Oil Cooler	Engine Water Cooled, Plate Type	
Lube Oil Filter	Full Flow with By-Pass Valve	
Lube Oil Pump	Gear Driven, Gear Type	
Manual Start Control	On Instrument Panel with Control Position Warning Light	
Overspeed Control	Electronic with Reset and Test on Instrument Panel	
Raw Water Cooling Loop – w/ Alarms	Galvanized	Sea Water, All 316SS, High Pressure
Raw Water Cooling Loop - Solenoid Operation	Automatic from Fire Pump Controller and from Engine Instrument Panel (for Horizontal Fire Pump Applications)	Not Supplied (for Vertical Turbine Fire Pump Applications)
Run – Stop Control	On Instrument Panel with Control Position Warning Light	
Starters	One (1) 24V-DC with Two (2) Start Contactors	
Throttle Control	Adjustable Speed Control, Tamper Proof	
Water Pump	Centrifugal Type, Dual (2) V-Belt Drive with Guard	

MODEL NOMENCLATURE (10 Digit Models)

