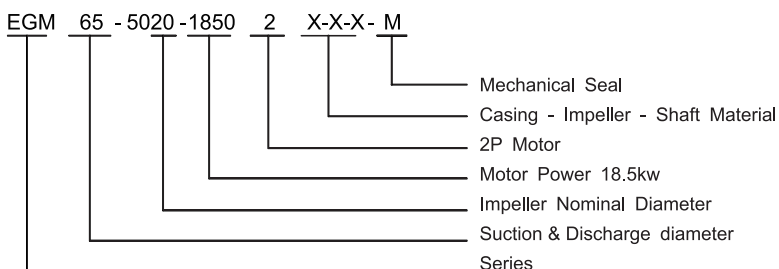




### Description & Features

EGM series are vertical in-line pumps. The biggest feature is vertical structure which sharply reduces installation space. Motor shaft is plugged into pump shaft to ensure alignment of pump and motor. This series pump adopts IEC standard motor and pump head can be assembled separately.

### Model Instruction:



### Material Code

C: Cast Iron      45: ASTM 1045S  
 Q: Ductile Iron    304: ASTM 304S  
 B: Brass            316: ASTM 316  
 S: ASTM 420        M: Mechanical Seal

### Design & Structure

Design	Performance referring to BS EN733/DIN24255 standard
Structure	Vertical, Single-Stage, Single-Suction, Volute, Casing, In-line, Close-coupled
DN (mm)	40~200
Flange	DIN2501 PN16 GB / T17241.6 PN1.6
Motor	IEC standard motor

### Applications

- Cold and Hot Water Circulation Pump
- Municipal water supply
- HVAC and Cooling Tower
- Booster Pump
- Pool and fountain water transfer

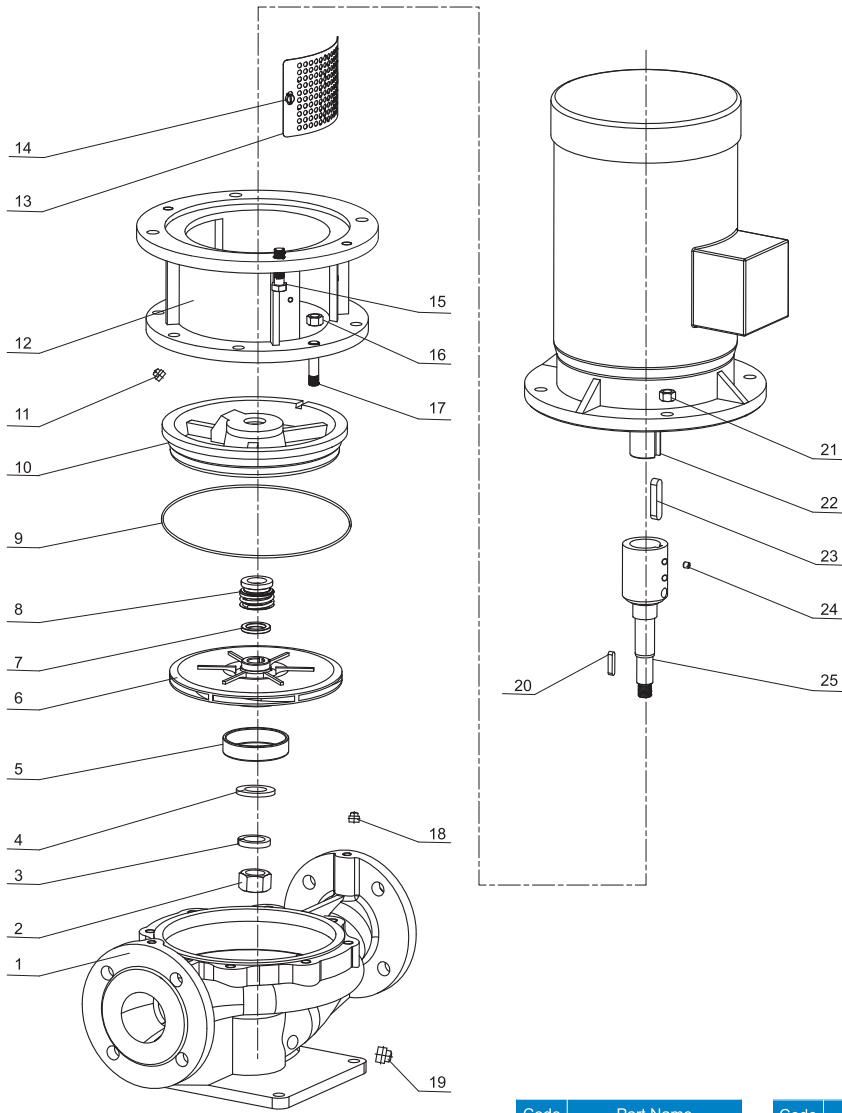
### Material

Part	Standard Material	Options on request
Casing	Cast Iron	Ductile Iron
Impeller	Brass	Cast Iron / ASTM304(CF8) / ASTM316(CF8M)
Shaft	ASTM420	ASTM304 / ASTM316 / ASTM1045
Shaft Seal	Mechanical Seal	-

### Operating Data

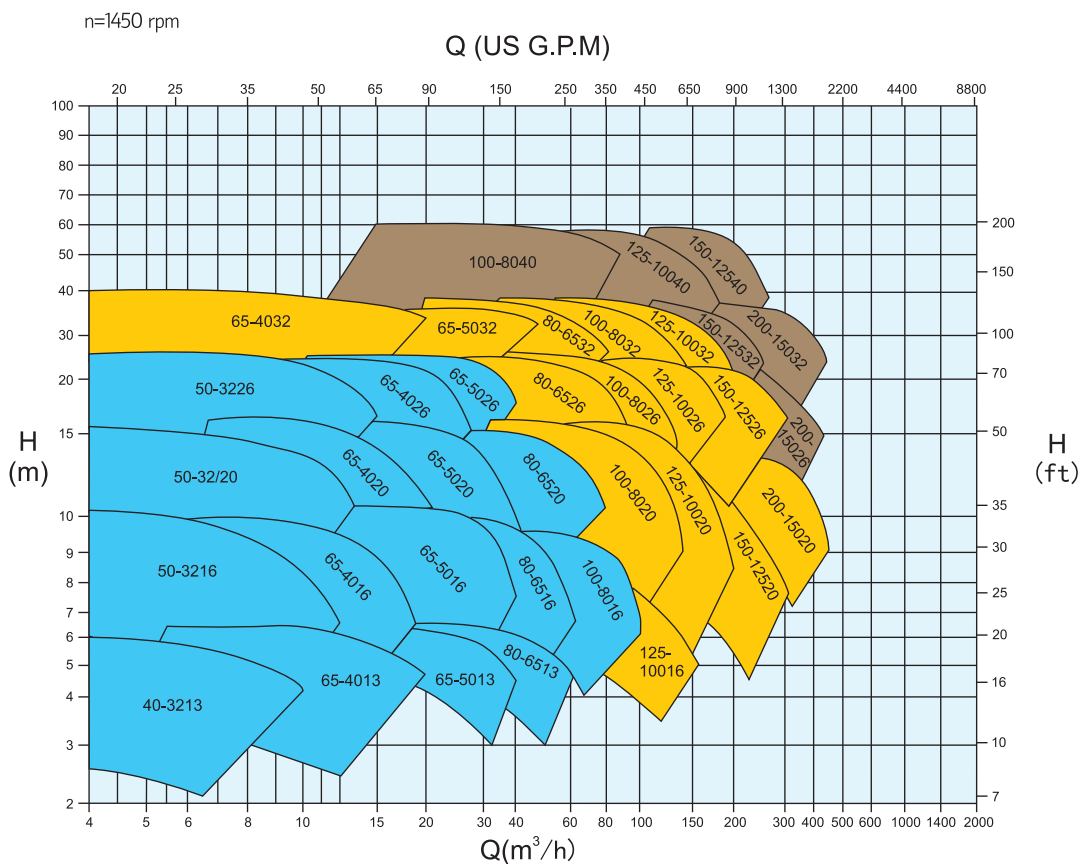
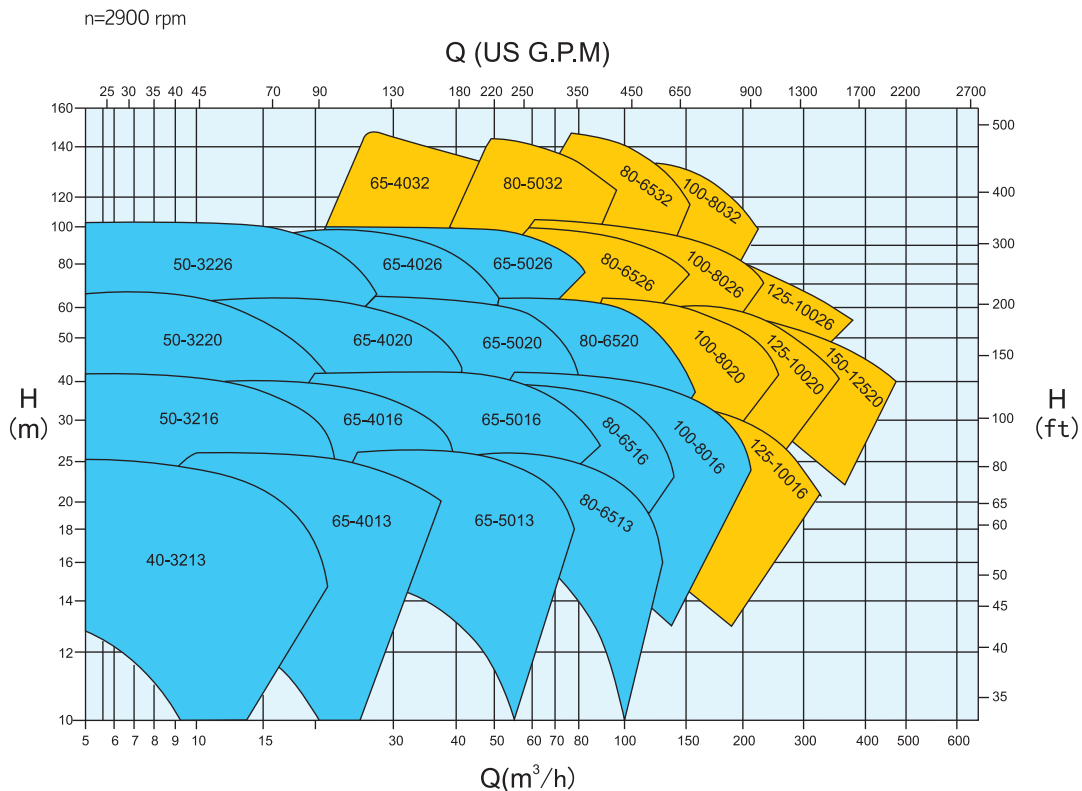
Flow Rate(Q)	4~500m <sup>3</sup> /h
Head(H)	8~150m
Speed	1450 or 2900 rpm (50Hz) / 1750 or 3500 rpm (60Hz)
Max Temperature	110°C
Working Pressure	1.0 MPa standard; 1.6 MPa on request
Conveying Medium	Clean water or liquids similar to clean water in physical property

### EGM Series Explode View & List of Parts



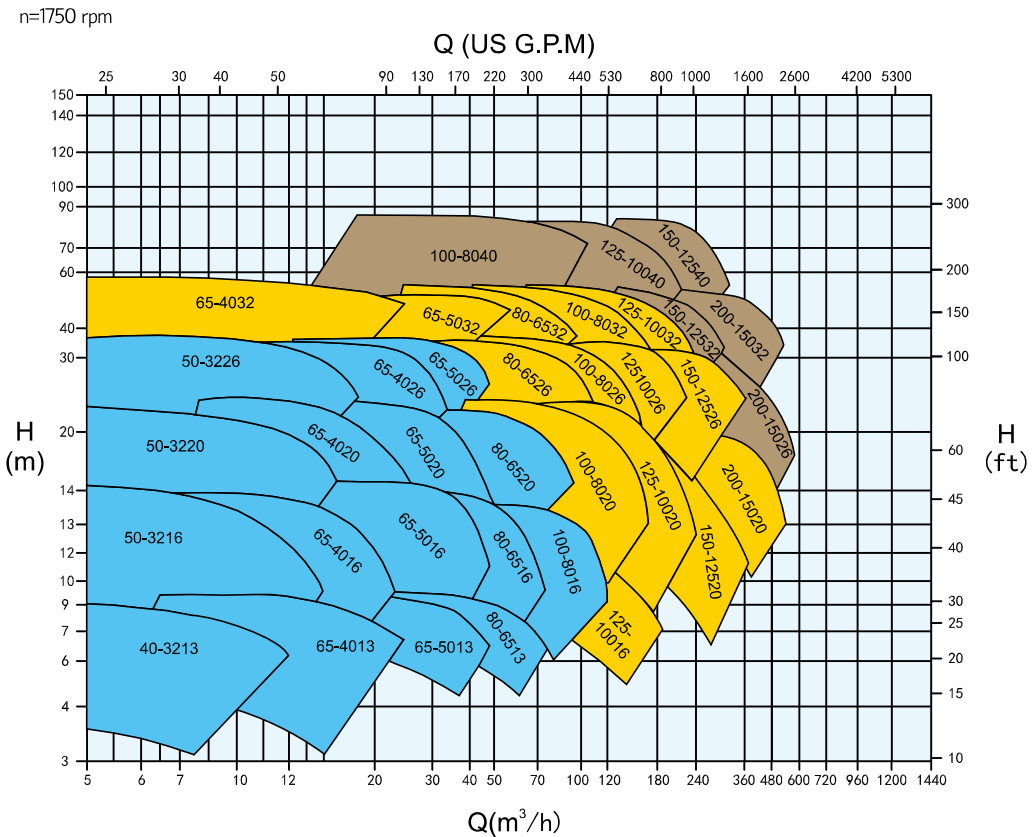
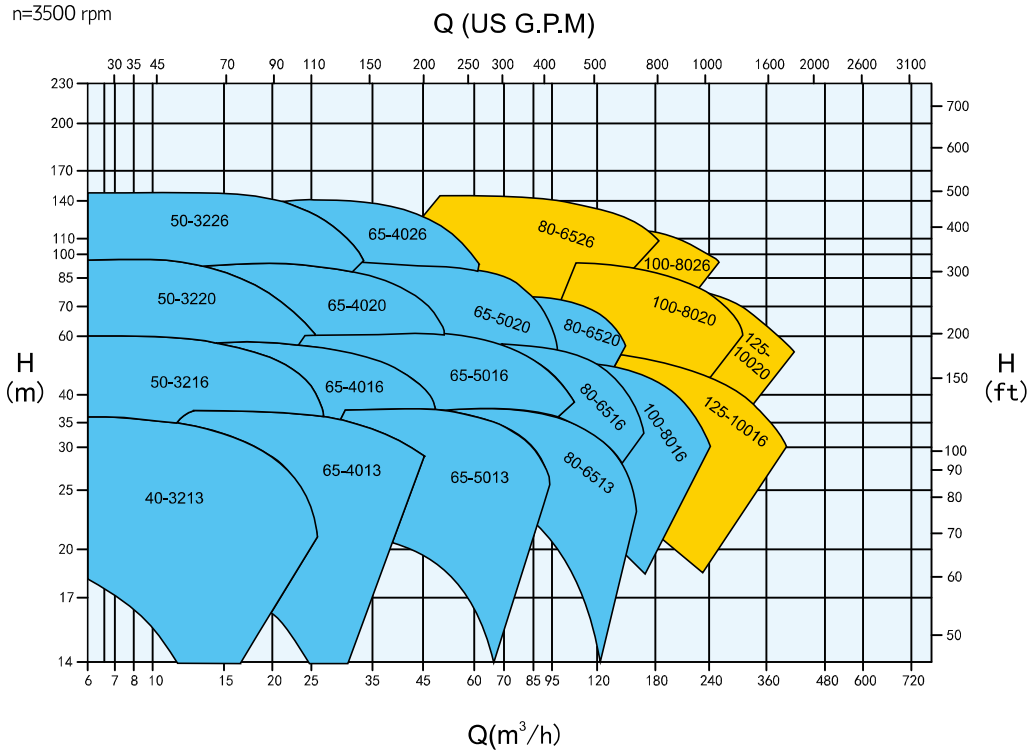
Code	Part Name	Code	Part Name
1	Casing	14	Screw
2	Impeller Nut	15	Screw Bolt
3	Flat Washer	16	Screw Nut
4	Spring Washer	17	Screw Bolt
5	Front-Wear Ring	18	1/4 Plug
6	Impeller	19	3/8 Plug
7	Seal Seat	20	Key
8	Mech Seal	21	Screw Nut
9	Casing Gasket	22	Motor
10	Casing Cover	23	Key
11	1/4 Plug	24	Screw
12	Adapter	25	Shaft
13	Guard		

### EGM Series-50Hz Performance



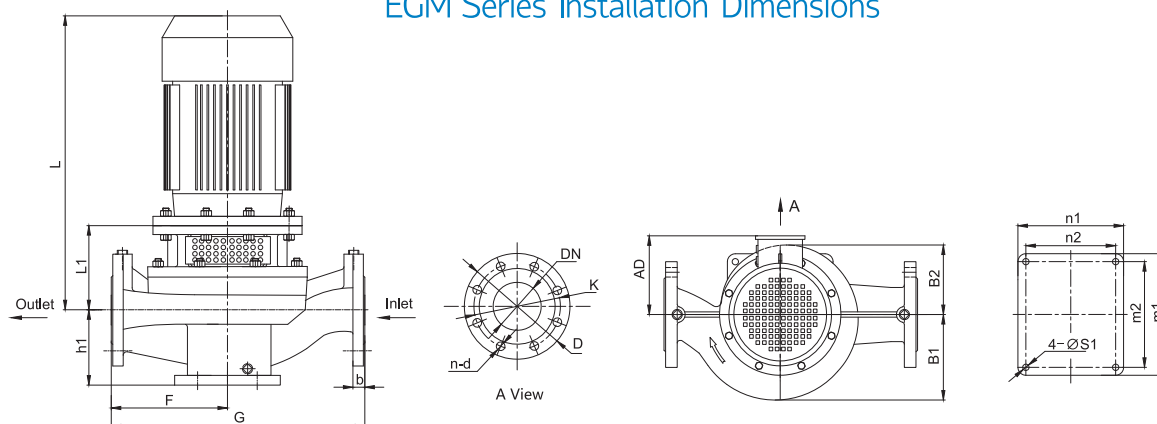
Performance to ISO9906 Grade 2 for clean cold water only

### EGM Series-60Hz Performance



Performance to ISO9906 Grade 2 for clean cold water only

### EGM Series Installation Dimensions



EGM		Motor(V1)		Installation Dimensions(mm)										Flange Dimensions(mm)				Weight(kg)					
Model	Model	kw	h1	L1	F	G	L	AD	B1	B2	n2xm2	n1xm1	s1	DN	D	K	n-d	b	Pump	Motor	Total		
EGM40-3213-00554	Y2-801-4	0.55	113	152	150	310	407	145	104	95	170x200	200x230	12	40	150	110	4-Φ18	18	32	16	48		
EGM40-3213-01102	Y2-802-2	1.1					422	155											32	17	49		
EGM40-3213-01502	Y2-90S-2	1.5					447	155											32	21	53		
EGM40-3213-02202	Y2-90L-2	2.2	128	175	360	407	145	113	99	65				185	145	80	200	160	8-Φ18	25	32	26	57
EGM65-4013-00554	Y2-801-4	0.55				422	155														37	16	53
EGM65-4013-01502	Y2-90S-2	1.5				447	155														38	21	59
EGM65-4013-02202	Y2-90L-2	2.2	164	200	410	489	180	130	105	504				190	170	185	145	4-Φ18	20	40	44	84	
EGM65-4013-03002	Y2-100L-2	3				504	190													40	43	83	
EGM65-4013-04002	Y2-112M-2	4				577	210													40	26	63	
EGM65-5013-00554	Y2-801-4	0.55	155	164	200	407	145	160	116	577				210	170	185	145	4-Φ18	20	40	16	56	
EGM65-5013-00754	Y2-802-4	0.75				422	155													40	17	57	
EGM65-5013-01104	Y2-90S-4	1.1				504	190													41	22	63	
EGM65-5013-04002	Y2-112M-2	4	187	220	460	504	190	140	116	577	210	170	185	145	4-Φ18	20	46	43	89				
EGM65-5013-05502	Y2-132S1-2	5.5				577	210										49	65	115				
EGM65-5013-07502	Y2-132S2-2	7.5				725	255										49	69	119				
EGM80-6513-00754	Y2-802-4	0.75	160	187	220	407	145	140	116	577	210	170	185	145	4-Φ18	20	44	17	61				
EGM80-6513-01104	Y2-90S-4	1.1				422	155										45	22	68				
EGM80-6513-07502	Y2-132S2-2	7.5				577	210										54	69	123				
EGM80-6513-11002	Y2-160M1-2	11	725	255	62	108	170																
EGM50-3216-00554	Y2-801-4	0.55	118	160	320	407	145	115	115	489	180	170	165	125	4-Φ18	20	36	16	52				
EGM50-3216-00754	Y2-802-4	0.75				447	155										36	17	53				
EGM50-3216-02202	Y2-90L-2	2.2				489	180										36	26	62				
EGM50-3216-03002	Y2-100L-2	3	489	180	38	44	82																
EGM50-3216-04002	Y2-112M-2	4	504	190	38	43	81																
EGM50-3216-05502	Y2-132S1-2	5.5	577	210	42	65	107																
EGM65-4016-00554	Y2-801-4	0.55	138	152	175	407	145	128	115	489	180	170	185	145	4-Φ18	20	42	16	58				
EGM65-4016-00754	Y2-802-4	0.75				422	155										42	17	59				
EGM65-4016-01104	Y2-90S-4	1.1				447	155										43	22	65				
EGM65-4016-03002	Y2-100L-2	3	489	180	44	44	88																
EGM65-4016-04002	Y2-112M-2	4	504	190	44	43	87																
EGM65-4016-05502	Y2-132S1-2	5.5	577	210	49	65	114																
EGM65-4016-07502	Y2-132S2-2	7.5	725	255	49	69	118																
EGM65-5016-00554	Y2-801-4	0.55	138	152	175	407	145	140	120	577	210	170	185	145	4-Φ18	20	44	16	60				
EGM65-5016-00754	Y2-802-4	0.75				422	155										44	17	61				
EGM65-5016-01104	Y2-90S-4	1.1				447	155										45	22	67				
EGM65-5016-01504	Y2-90L-4	1.5	447	155	45	27	71																
EGM65-5016-05502	Y2-132S1-2	5.5	577	210	51	65	116																
EGM65-5016-07502	Y2-132S2-2	7.5	725	255	51	69	120																
EGM65-5016-11002	Y2-160M1-2	11	725	255	54	108	162																
EGM65-5016-15002	Y2-160M2-2	15	725	255	54	109	163																
EGM80-6516-00754	Y2-802-4	0.75	158	164	480	407	145	162	132	489	180	170	200	160	8-Φ18	25	50	17	67				
EGM80-6516-01104	Y2-90S-4	1.1				422	155										52	22	74				
EGM80-6516-01504	Y2-90L-4	1.5				447	155										52	27	79				
EGM80-6516-02204	Y2-100L1-4	2.2	489	180	55	34	88																
EGM80-6516-07502	Y2-132S2-2	7.5	577	210	60	69	129																
EGM80-6516-11002	Y2-160M1-2	11	725	255	62	108	170																
EGM80-6516-15002	Y2-160M2-2	15	725	255	62	109	171																

EGM		Motor(V1)		Installation Dimensions(mm)											Flange Dimensions(mm)					Weight(kg)																
Model	Model	kw	h1	L1	F	G	L	AD	B1	B2	n2xm2	n1xm1	s1	DN	D	K	n-d	b	Pump	Motor	Total															
EGM100-8016-01504	Y2-90L-4	1.5	188	152	260	540	447	155	168	136	170x200	200x230	12	100	220	180	8-φ18	24	56	27	83															
EGM100-8016-02204	Y2-100L1-4	2.2		164			489	180											65	109	174															
EGM100-8016-03004	Y2-100L2-4	3		164			489	180											65	109	174															
EGM100-8016-11002	Y2-160M1-2	11		220			725	255											810	280	66	155	221													
EGM100-8016-15002	Y2-160M2-2	15		220			780	255											882	305	73	224	298													
EGM100-8016-18502	Y2-160L-2	18.5		222			810	280											882	305	73	224	298													
EGM100-8016-22002	Y2-180M-2	22		222			810	280											882	305	73	224	298													
EGM100-8016-30002	Y2-200L1-2	30	220	179	330	690	504	180	202	162	260x260	300x300	18	125	250	210	26	100	37	137																
EGM125-10016-03004	Y2-100L2-4	3	220	179	330	690	519	190	202	162	260x260	300x300	18	125	250	210	8-φ18	26	102	47	149															
EGM125-10016-04004	Y2-112M-4	4		179			519	190											108	133	241															
EGM125-10016-18502	Y2-160L-2	18.5		234			794	255											824	280	110	155	265													
EGM125-10016-22002	Y2-180M-2	22		234			824	280											897	305	110	155	265													
EGM125-10016-30002	Y2-200L1-2	30		237			824	280											897	305	113	224	337													
EGM125-10016-04004	Y2-112M-4	4		179			519	190											102	47	149															
EGM125-10016-18502	Y2-160L-2	18.5		234			794	255											824	280	110	155	265													
EGM125-10016-22002	Y2-180M-2	22	234	824	280	897	305	110	155	265																										
EGM125-10016-30002	Y2-200L1-2	30	237	824	280	897	305	113	224	337																										
EGM50-3220-00554	Y2-801-4	0.55	118	151	210	420	406	145	137	134	170x200	200x230	14	50	165	125	4-φ18	20	45	16	61															
EGM50-3220-00754	Y2-802-4	0.75					421	155											46	22	68															
EGM50-3220-01104	Y2-90S-4	1.1					421	155											46	22	68															
EGM50-3220-01504	Y2-90L-4	1.5					446	155											46	27	72															
EGM50-3220-05502	Y2-132S1-2	5.5					186	576											210	51	65	116														
EGM50-3220-07502	Y2-132S2-2	7.5					186	576											210	51	69	120														
EGM50-3220-11002	Y2-160M1-2	11					218	723											255	55	108	163														
EGM65-4020-00754	Y2-802-4	0.75	138	151	240	480	406	145	144	134	170x200	200x230	14	65	185	145	4-φ18	20	50	17	67															
EGM65-4020-01104	Y2-90S-4	1.1					421	155											51	22	73															
EGM65-4020-01504	Y2-90L-4	1.5					446	155											51	27	77															
EGM65-4020-05502	Y2-132S1-2	5.5					186	576											210	56	65	121														
EGM65-4020-07502	Y2-132S2-2	7.5					186	576											210	56	69	125														
EGM65-4020-11002	Y2-160M1-2	11					218	723											255	60	108	168														
EGM65-5020-01504	Y2-90L-4	1.5					154	449											155	52	27	78														
EGM65-5020-02204	Y2-100L1-4	2.2	166	491	180	158	142	158	142	170x200	200x230	14	65	185	145	4-φ18	20	54	34	87																
EGM65-5020-03004	Y2-100L2-4	3																166	491	180	54	37	90													
EGM65-5020-11002	Y2-160M1-2	11																221	726	255	61	108	169													
EGM65-5020-15002	Y2-160M2-2	15																221	726	255	61	109	170													
EGM65-5020-18502	Y2-160L-2	18.5																221	781	255	61	133	194													
EGM80-6520-02204	Y2-100L1-4	2.2																150	163	260	540	488	180	170	148	170x200	200x230	14	80	200	160	8-φ18	25	62	34	96
EGM80-6520-03004	Y2-100L2-4	3																				163	503											190	62	37
EGM80-6520-04004	Y2-112M-4	4	218	723	255	62	47	109																												
EGM80-6520-15002	Y2-160M2-2	15	218	723	255	69	109	178																												
EGM80-6520-18502	Y2-160L-2	18.5	218	778	255	69	133	202																												
EGM80-6520-22002	Y2-180M-2	22	221	808	280	70	155	225																												
EGM80-6520-30002	Y2-200L1-2	30	221	881	305	76	224	300																												
EGM100-8020-03004	Y2-100L2-4	3	188	179	290	600	504	180	192	166	170x200	200x230	14	100	220	180	8-φ18	24	76	37	113															
EGM100-8020-04004	Y2-112M-4	4					179	519											190	76	47	123														
EGM100-8020-05504	Y2-132S-4	5.5					202	592											210	80	65	145														
EGM100-8020-07504	Y2-132M-4	7.5					234	632											280	80	79	158														
EGM100-8020-22002	Y2-180M-2	22					234	824											280	88	155	243														
EGM100-8020-30002	Y2-200L1-2	30					237	897											305	90	224	314														
EGM100-8020-37002	Y2-200L2-2	37					237	942											335	90	235	325														
EGM100-8020-45002	Y2-225M-2	45	237	942	335	95	286	380																												
EGM125-10020-04004	Y2-112M-4	4	220	179	330	680	519	190	208	170	200x250	250x300	18	125	250	210	8-φ18	26	97	47	144															
EGM125-10020-05504	Y2-132S-4	5.5					202	592											210	99	65	164														
EGM125-10020-07504	Y2-132M-4	7.5					234	632											280	99	79	178														
EGM125-10020-11004	Y2-160M-4	11					237	739											254	103	108	211														
EGM125-10020-30002	Y2-200L1-2	30					237	897											305	109	224	333														
EGM125-10020-37002	Y2-200L2-2	37					237	897											305	109	235	344														
EGM125-10020-45002	Y2-225M-2	45					237	942											335	114	286	399														
EGM125-10020-55002	Y2-250M-2	55	271	1041	370	126	373	499																												
EGM150-12520-75002	Y2-280S-2	75	260	202	360	740	1116	410	242	186	340x340	420x420	18	150	285	240	8-φ22	28	126	485	610															
EGM150-12520-07504	Y2-132M-4	7.5					202	632											210	126	79	204														
EGM150-12520-11004	Y2-160M-4	11					234	739											255	129	108	238														
EGM150-12520-55002	Y2-250M-2	55					271	1041											370	152	373	525														
EGM150-12520-75002	Y2-280S-2	75					271	1116											410	153	485	637														
EGM150-12520-90002	Y2-280M-2	90					271	1166											410	153	541	694														
EGM200-15020-11004	Y2-160M-4	11					280	766											255	165	108	273														
EGM200-15020-15004	Y2-160L-4	15	261	821	280	165	129	294																												
EGM200-15020-18504	Y2-180M-4	18.5	261	851	280	167	157	324																												
EGM50-3226-02204	Y2-100L1-4	2.2	118	173	230	470	498	180	168	168	170x200	200x230	14	50	165	125	4-φ18	20	62	34	96															

EGM		Motor(V1)		Installation Dimensions(mm)											Flange Dimensions(mm)					Weight(kg)																					
Model	Model	kw	h1	L1	F	G	L	AD	B1	B2	n2xm2	n1xm1	s1	DN	D	K	n-d	b	Pump	Motor	Total																				
EGM50-3226-03004	Y2-100L2-4	3	118	173	230	470	498	180	168	168				50	165	125			62	37	99																				
EGM50-3226-11002	Y2-160M1-2	11		228			733	255														70	108	178																	
EGM50-3226-15002	Y2-160M2-2	15					788															70	109	179																	
EGM50-3226-18502	Y2-160L-2	18.5	138	173			788	180											66	34	100																				
EGM65-4026-02204	Y2-100L1-4	2.2					498	180														66	37	103																	
EGM65-4026-03004	Y2-100L2-4	3																																							
EGM65-4026-11002	Y2-160M1-2	11																																							
EGM65-4026-15002	Y2-160M2-2	15																																							
EGM65-4026-18502	Y2-160L-2	18.5																																							
EGM65-4026-22002	Y2-180M-2	22																																							
EGM65-5026-02204	Y2-100L1-4	2.2																																							
EGM65-5026-03004	Y2-100L2-4	3																																							
EGM65-5026-04004	Y2-112M-4	4																																							
EGM65-5026-05504	Y2-132S-4	5.5	138	174	260	520	497	180	178	164	170x200	200x230	14	65	185	145	4-Φ18	20	68	34	102																				
EGM65-5026-18502	Y2-160L-2	18.5					512	190														68	37	105																	
EGM65-5026-22002	Y2-180M-2	22					587	210														71	65	137																	
EGM65-5026-30002	Y2-200L1-2	30					788	280														75	133	208																	
EGM65-5026-37002	Y2-200L2-2	37					819	280														76	155	231																	
EGM80-6526-04004	Y2-112M-4	4																																							
EGM80-6526-05504	Y2-132S-4	5.5																																							
EGM80-6526-07504	Y2-132M-4	7.5																																							
EGM80-6526-30002	Y2-200L1-2	30																																							
EGM80-6526-37002	Y2-200L2-2	37																																							
EGM80-6526-45002	Y2-225M-2	45	168	179	290	590	897	305	195	170				80	200	160	8-Φ18	22	95	224	319																				
EGM80-6526-55002	Y2-250M-2	55					592	210														95	235	330																	
EGM100-8026-05504	Y2-132S-4	5.5					632	210														99	286	385																	
EGM100-8026-07504	Y2-132M-4	7.5					942	335														113	373	486																	
EGM100-8026-11004	Y2-160M-4	11					1041	370														93	65	158																	
EGM100-8026-37002	Y2-200L2-2	37					897	305														93	79	172																	
EGM100-8026-45002	Y2-225M-2	45					942	335														99	108	207																	
EGM100-8026-55002	Y2-250M-2	55					1041	370														113	373	486																	
EGM100-8026-75002	Y2-280S-2	75					1116	410														123	485	607																	
EGM100-8026-90002	Y2-280M-2	90																																							
EGM100-8026-15004	Y2-160L-4	15	188	202	310	630	592	210	208	184	170x200	200x230	14	100	220	180	8-Φ18	24	118	235	353																				
EGM100-8026-07504	Y2-132M-4	7.5					632	210														93	79	172																	
EGM100-8026-11004	Y2-160M-4	11					739	255														99	108	207																	
EGM100-8026-37002	Y2-200L2-2	37					897	305														118	235	353																	
EGM100-8026-45002	Y2-225M-2	45					942	335														120	286	406																	
EGM100-8026-55002	Y2-250M-2	55					1041	370														123	373	496																	
EGM100-8026-75002	Y2-280S-2	75					1116	410														123	485	607																	
EGM125-10026-11004	Y2-160M-4	11																																							
EGM125-10026-15004	Y2-160L-4	15																																							
EGM125-10026-18504	Y2-180M-4	18.5					220	238														340	700	743	255	222	192	200x250	250x300	18	125	250	210	8-Φ18	26	125	108	233			
EGM125-10026-75002	Y2-280S-2	75	798	255	125	129			254																																
EGM125-10026-90002	Y2-280M-2	90																																							
EGM150-12526-15004	Y2-160L-4	15																																							
EGM150-12526-18504	Y2-180M-4	18.5																																							
EGM150-12526-22004	Y2-180L-4	22																																							
EGM150-12526-30004	Y2-200L-4	30																																							
EGM200-15026-18504	Y2-180M-4	18.5	260	238	360	760			798	255	245	210				150	285	240	8-Φ22	30	155			129	284																
EGM150-12526-30004	Y2-200L-4	30							829	280																													155	157	313
EGM200-15026-22004	Y2-180L-4	22							869	305																													155	179	334
EGM200-15026-30004	Y2-200L-4	30					892	305	161	240												401																			
EGM200-15026-18504	Y2-180M-4	18.5					838	280	194	157												351																			
EGM200-15026-22004	Y2-180L-4	22					878	305	194	179												373																			
EGM200-15026-30004	Y2-200L-4	30					908	305	210	240												450																			
EGM65-4032-03004	Y2-100L2-4	3					138	179														504	180			200	200				65	185	145	4-Φ18	20	91	37	128			
EGM65-4032-04004	Y2-112M-4	4																				519	190																91	47	138
EGM65-4032-05504	Y2-132S-4	5.5																				591	210																95	65	160
EGM65-4032-07504	Y2-132M-4	7.5	631	280	95	79					173																														
EGM65-4032-22002	Y2-180M-2	22	828	280	100	155					255																														
EGM65-4032-30002	Y2-200L1-2	30	897	305	104	224					329																														
EGM65-4032-37002	Y2-200L2-2	37																																							
EGM65-4032-45002	Y2-225M-2	45																																							
EGM65-5032-05504	Y2-132S-4	5.5																																							
EGM65-5032-07504	Y2-132M-4	7.5																																							
EGM65-5032-11004	Y2-160M-4	11	155	201	590		591	210	214	198								98	65	164																					
EGM65-5032-37002	Y2-200L2-2	37					631	255													98	79	177																		
EGM65-5032-11004	Y2-160M-4	11																																							
EGM65-5032-37002	Y2-200L2-2	37																																							



EGM Model	Motor(V1)		Installation Dimensions(mm)											Flange Dimensions(mm)					Weight(kg)			
	Model	kw	h1	L1	F	G	L	AD	B1	B2	n2xm2	n1xm1	s1	DN	D	K	n-d	b	Pump	Motor	Total	
EGM65-5032-45002	Y2-225M-2	45	155	237	290	590	942	335	214	198	170x200	200x230	14	65	185	145	4-Φ18	20	115	286	401	
EGM65-5032-55002	Y2-250M-2	55		273			1043	370											133	373	507	
EGM65-5032-75002	Y2-280S-2	75					1118	410											134	485	618	
EGM80-6532-07504	Y2-132M-4	7.5	175	201	310	640	631	210	224	210	200x250	250x300	18	80	200	160	8-Φ18	22	115	79	194	
EGM80-6532-11004	Y2-160M-4	11		235			740	255											118	108	226	
EGM80-6532-15004	Y2-160L-4	15					795												118	129	246	
EGM80-6532-45002	Y2-225M-2	45	175	252	310	640	957	335	224	210	200x250	250x300	18	80	200	160	8-Φ18	22	139	286	424	
EGM80-6532-55002	Y2-250M-2	55					1042	370											145	373	518	
EGM80-6532-75002	Y2-280S-2	75		272			1117	410											145	485	630	
EGM80-6532-90002	Y2-280M-2	90				1167	410											145	541	686		
EGM100-8032-11004	Y2-160M-4	11	186	235	340	700	740	255	237	210	200x250	250x300	18	100	220	180	8-Φ18	24	127	108	236	
EGM100-8032-15004	Y2-160L-4	15						795												127	129	256
EGM100-8032-18504	Y2-180M-4	18.5						825											280	128	157	285
EGM100-8032-75002	Y2-280S-2	75	186	272	340	700	1117	410	237	210	200x250	250x300	18	100	220	180	8-Φ18	24	155	485	639	
EGM100-8032-90002	Y2-280M-2	90						1167												155	541	695
EGM125-10032-15004	Y2-160L-4	15																		795	255	
EGM125-10032-18504	Y2-180M-4	18.5	240	235	360	740	825	280	246	220	340x340	420x420	18	125	250	210	8-Φ22	26	148	157	305	
EGM125-10032-22004	Y2-180L-4	22					865												148	179	326	
EGM125-10032-30004	Y2-200L-4	30		237			897	305											154	240	394	
EGM150-12532-15004	Y2-160L-4	15	260	249	400	895	809	255	266	226	340x340	420x420	18	150	285	240	8-Φ22	26	196	129	325	
EGM150-12532-18504	Y2-180M-4	18.5						839											280	196	157	353
EGM150-12532-22004	Y2-180L-4	22						879												196	179	375
EGM150-12532-30004	Y2-200L-4	30				909	305											198	240	438		
EGM150-12532-37004	Y2-225S-4	37		284			964	335											206	301	507	
EGM200-15032-30004	Y2-200L-4	30	300	250	430	920	910	305	290	242	340x340	420x420	18	200	340	295	12-Φ22	30	241	240	481	
EGM200-15032-37004	Y2-225S-4	37					965	335											249	301	550	
EGM200-15032-45004	Y2-225M-4	45		285			990												249	312	562	
EGM200-15032-55004	Y2-250M-4	55				1055	370												264	383	647	
EGM100-8040-15004	Y2-160L-4	15	220	249	400	800	809	255	265	248	310x310	370x370	18	100	220	180	8-Φ18	24	188	129	317	
EGM100-8040-18504	Y2-180M-4	18.5						839											280	191	157	348
EGM100-8040-22004	Y2-180L-4	22						879												191	179	370
EGM100-8040-30004	Y2-200L-4	30				909	305												197	240	436	
EGM125-10040-22004	Y2-180L-4	22	240	284	380	810	879	280	285	262	200x250	250x300	18	125	250	210	8-Φ18	26	204	179	383	
EGM125-10040-30004	Y2-200L-4	30						909											305	206	240	445
EGM125-10040-37004	Y2-225S-4	37						964											335	212	301	513
EGM125-10040-45004	Y2-225M-4	45		989															212	312	524	
EGM150-12540-30004	Y2-200L-4	30	250	249	400	850	909	305	296	264	250x300	300x350	18	150	285	240	8-Φ22	26	225	240	465	
EGM150-12540-37004	Y2-225S-4	37					964	335											231	301	531	
EGM150-12540-45004	Y2-225M-4	45		284			989												231	312	543	
EGM150-12540-55004	Y2-250M-4	55				1054	370												235	383	617	
EGM150-12540-75004	Y2-280S-4	75					1129	410											236	544	780	