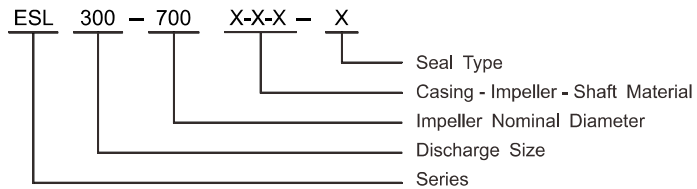


Description & Features

ESL series vertical split casing pumps are designed with double suctions. This kind of pumps are of high flow rate, high efficiency, stable operation, low noise and long service life, easy to install and maintain. Widely used in plant, mine, city water supply, irrigation, HVAC and vessel industry.

Model Instruction:



Material Code

C: Cast Iron	S304: ASTM 304
Q: Ductile Iron	S316: ASTM 316
B: Brass	Seal Type:
S: ASTM 420	M: Mechanical Seal
45:ASTM 1045	P: Gland Packing

Design & Structure

Design	Performance referring to GB/T5657-95, Q/ FZEF 001-2014 Standard
Structure	Single-Stage, Double-Suction, Split-Casing
DN (mm)	80~400
Flange	DIN2501 PN16 GB / T17241.6 PN1.6

Material

Part	Standard Material	Options on request
Casing	Cast Iron	Ductile Iron
Impeller	Brass	Cast Iron
Shaft	ASTM1045	ASTM304 / ASTM316 / ASTM420
Shaft Seal	Mechanical Seal	Gland Packing

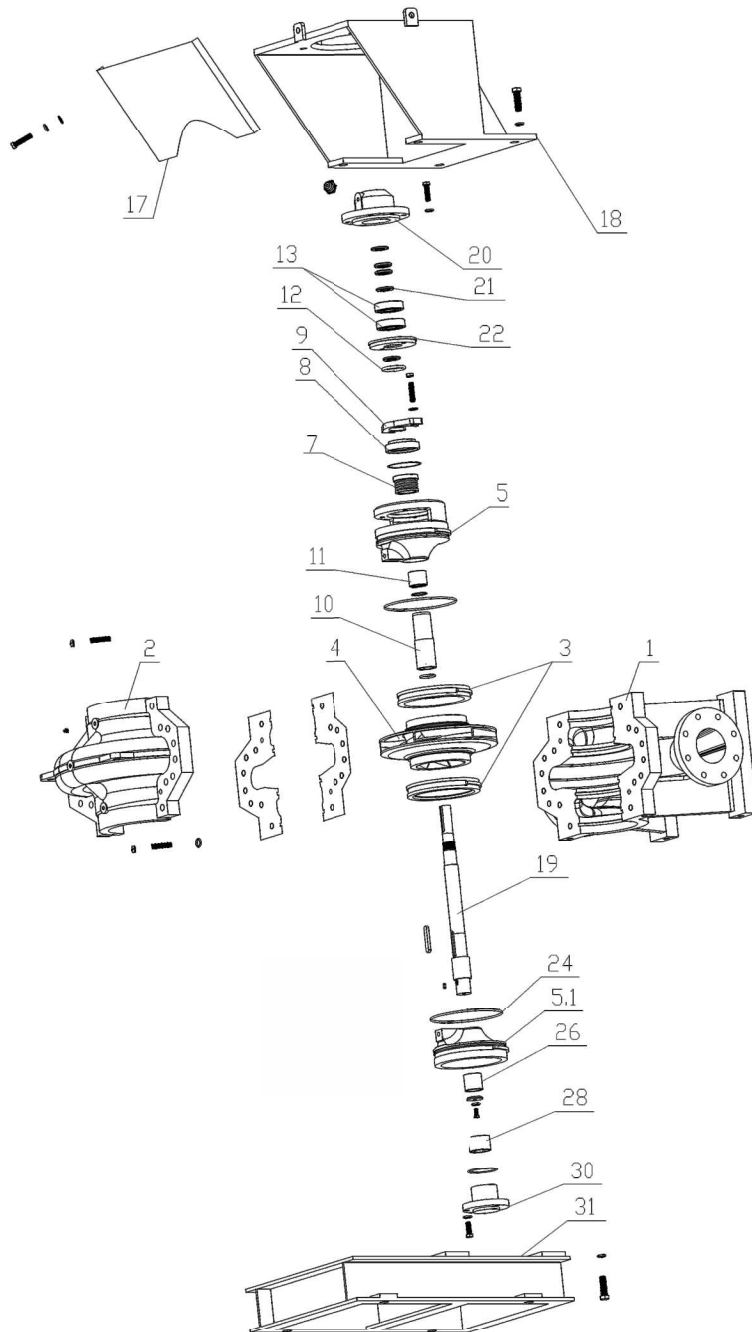
Applications

- HVAC and Cooling Tower
- Municipal Water Supply
- Pump Station
- Marine and Ship Building
- Power Plant / Water Plant
- Industrial water supply system
- Fire Fighting System

Operating Data

Flow Rate(Q)	36~3400m ³ /h
Head(H)	8~190 m
Speed	1480 or 2980 rpm (50Hz) / 1780 or 3580 rpm (60Hz)
Max Temperature	85°C(standard) ; 105°C(on request)
Working Pressure	1.6MPa(standard) ; 2.5MPa(on request)
Conveying Medium	Clean water or liquids similar to clean water in physical property

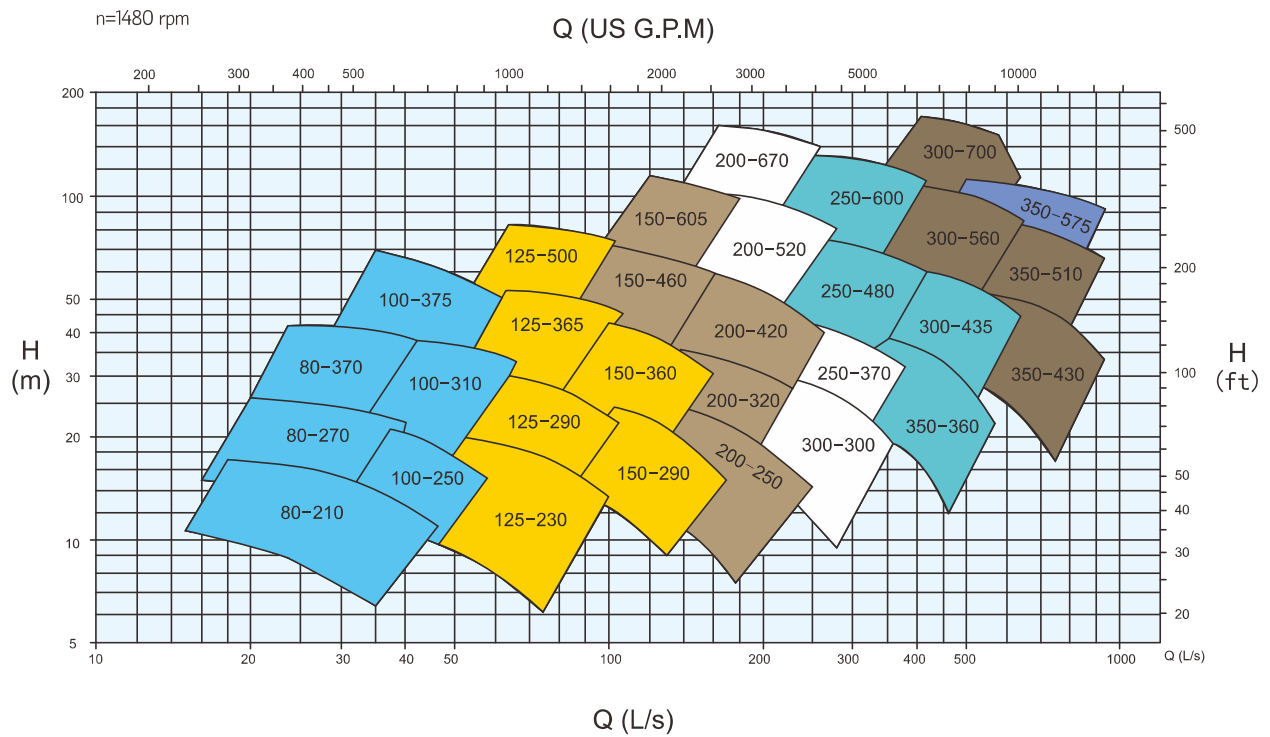
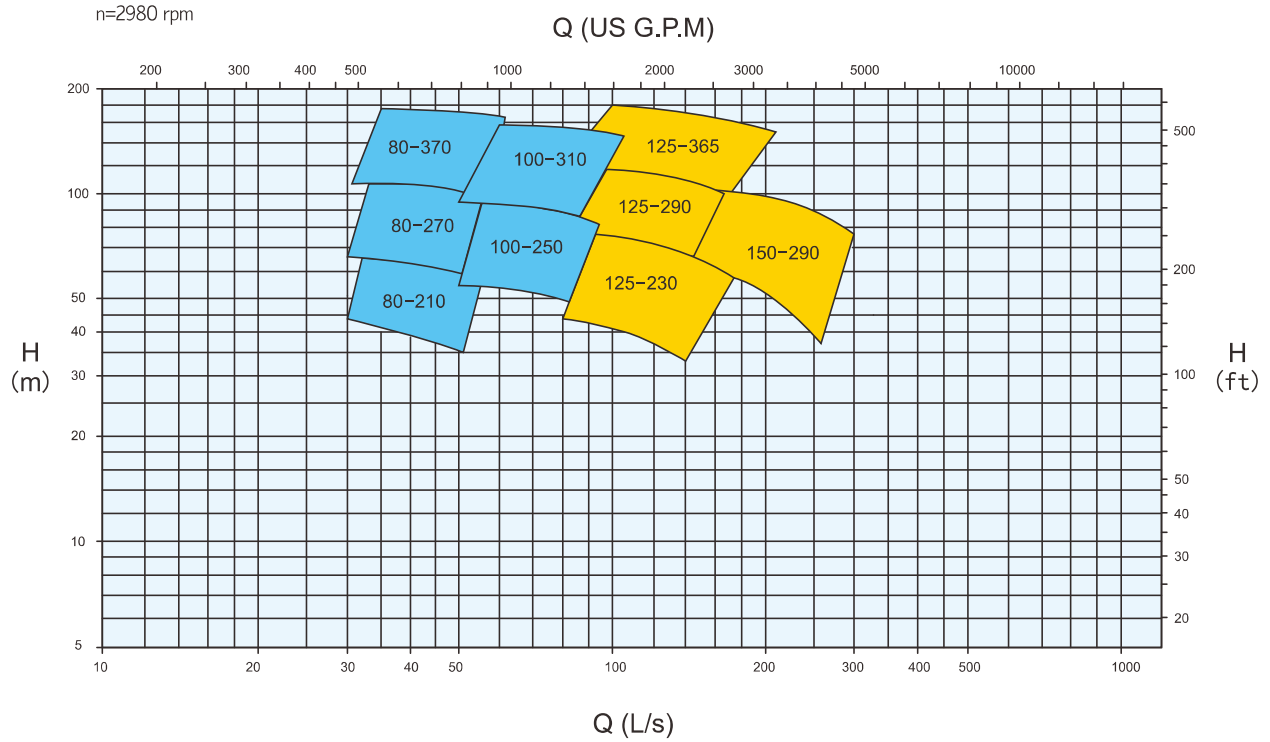
ESL Series Explode View & List of Parts



Code	Part Name
1	Casing-Bottom
2	Casing-Top
3	Wear Ring
4	Impeller
5	Seal Frame
5.1	Seal Frame
7	Mechanical Seal
8	Seal Cover
9	Seal Plate
10	Shaft Sleeve
11	Shaft Sleeve-short

Code	Part Name
12	Slinger
13	Ball Bearing
17	Guard
18	Adapter
19	Shaft
20	Bearing Frame
21	Bearing Seal Plate
22	Bearing Cover
26	Shaft Sleeve
28	Bearing Sleeve
30	Bearing Frame
31	Base Plate

ESL Series-50Hz Performance



ESL Series-60Hz Performance

